

Refresh Your  
Day with  
**Tropical  
SuperFruits**



# CAP ORGANIC

it's always unique

*The jungles miracle gift to the world..!*

**PROUDLY MADE IN SRI LANKA**





*Connect with nature*



**CAP Green Forest (Pvt) Ltd**  
*Cultivation*  
Est. 2017 | PV 120886



**CAP Organic (Pvt) Ltd**  
*Value Addition and Trading*  
Est. 2019 | PV 00218923



**CAP Engineering**  
*Design & Consultation*  
Est. 2013 | K11201



**The Agro Forest**  
*Agro-Tourism*  
Est. 2018 | K15119



**CAP Vinery (Pvt) Ltd**  
*Manufacturing of Alcoholic Beverages*  
Est. 2022 | PV 00269745



**CAP Fruity (Pvt) Ltd**  
*Fresh Fruits & Vegetables Provider*  
Est. 2022 | PV 00261233



**CAP Ceylon F & B FZC**  
*Natural | Organic Food & Beverage Provider*  
Est. 2022

## About us

CAP is a green agriculture technology and a farming company involved in agricultural crop production. CAP has initiated a project in Sri Lanka with the main purpose of establishing and developing the agro-business in the country. CAP has embarked on a business rollout plan which comprises of:



■ The upgrade and expansion of CAP's vertically integrated operations.

■ The expansion and modernization of the Company's primary agricultural operations.

■ Support the growth of the Company's operations.

[www.capceylondubai.com](http://www.capceylondubai.com)



**CAP**  **UBAI**  
CONNECT WITH NATURE



**CAP CEYLON F & B FZC**  
C/O SRI LANKA TRADE OFFICE,  
RADISSON BLU HOTEL DEIRA CREEK,





**Glass bottle with safety metal lid**

**No sugar**



# GRAVIOLA CLEANSE™

REFRESH YOUR DAY WITH THE TROPICAL FRUIT



LIME

SOURSOP



"SEPERATION IS NATURAL"

“Everything tastes good, when it helps you feel Slim”



**100% Natural**  
Graviola Pulp & Lime

**250mL e**  
8.5 fl.oz

**+ No Preservatives**

250ml Glass Bottle with Safety Metal Lid, 100% Natural Graviola Pulp, Natural Lime juice, No Added Preservatives, Sugar-Free (used Stevia - 0g/100ml) with 12-month Shelf life.

**12 months**  
Pasteurization & Shelf life



"SEPERATION IS NATURAL"

SHAKE WELL READY TO DRINK

"NOTHING TASTES AS GOOD AS BEING SLIM FREE"

SUGAR	SALT	FAT
0g	0g	0g

250ml 8.5 fl.oz. PRODUCT OF SRI LANKA



**100%  
Natural  
Graviola Pulp**

**Health and  
Comfort, Glass  
Bottled**

# GRAVIOLA™ COMFORT™

REFRESH YOUR DAY WITH THE  
TROPICAL FRUIT

**Glass  
bottle  
with  
safety  
metal lid**

250ml Glass Bottle with Safety  
Metal Lid, 100% Natural Graviola  
Pulp, No Added Preservatives,  
Low Sugar with pasteurizing and  
Shelf Life -12 months

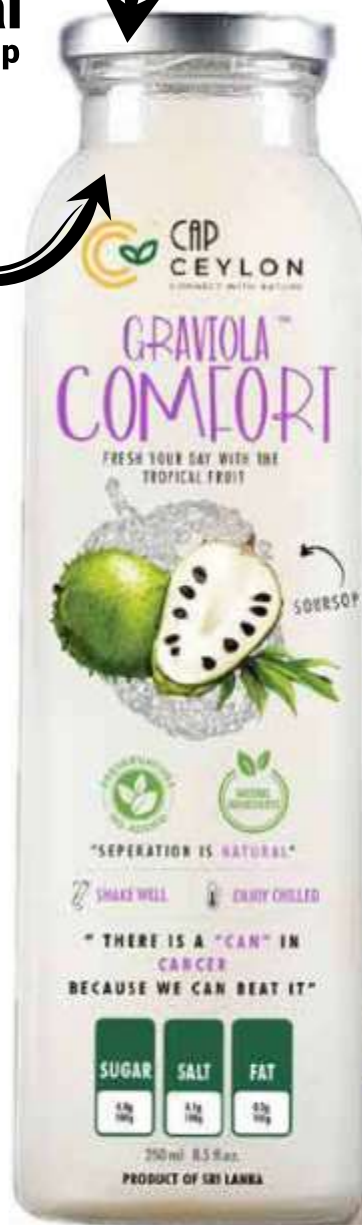
**250mLe  
8.5 fl.oz**



**Low sugar**

**SOURSOP**

**+ No  
Preservatives**



**12 month  
Pasteurization  
and Shelf life**

“SEPERATION IS NATURAL”

SUGAR	SALT	FAT
4g 10g	1g 10g	0g 10g

250 ml 8.5 fl.oz.  
PRODUCT OF SRI LANKA





# GRAVIOLA EDGE™

REFRESH YOUR DAY WITH THE  
TROPICAL FRUIT



LEMON

SOURSOP



"SEPERATION IS NATURAL"

**Glass**  
bottle  
*with*  
**safety**  
metal lid

**Medium**  
sugar

**+ No**  
Preservatives

**250mL<sub>e</sub>**  
8.5 fl.oz



**12** month  
Pasteurization and  
Shelf life

**100%**  
Natural  
Graviola Pulp &  
Lemon Flavor

250ml Glass Bottle with Safety MetalLid,  
100% Natural Graviola Pulp, Lemon  
Juice, No Added Preservatives, Medium  
Sugar with pasteurizing and Shelf Life -  
12 months.

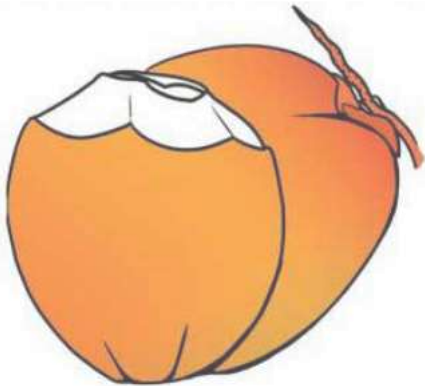
“Heart is not the  
only organ that  
symbolizes  
love, so does  
your  
**KIDNEYS**”



**CAP  
CEYLON**  
CONNECT WITH NATURE

# COOL KING

BOTTLED KING COCONUT WATER



FROM THE TROPICA ISLAND OF  
**SRI LANKA**

**100%  
Natural**  
King Coconut  
water

**+ No**  
Preservatives



**12** month  
Pasteurization  
and Shelf life

250ml Glass Bottle with  
Safety Metal Lid, 100% King  
Coconut Water, No Added  
Preservatives, No Added  
Sugar with pasteurizing and  
Shelf Life -12 months.



**Glass  
bottle  
with  
safety  
metal lid**

“Healthy drinking  
for a life that  
looks good and  
strong”



**250mL**  
**8.5 fl.oz** e

[ceylonorganiceu@gmail.com](mailto:ceylonorganiceu@gmail.com) |

[www.capceylon-eu.com](http://www.capceylon-eu.com)

**Glass bottle with safety metal lid**

**12 months**  
Pasteurization & Shelf life

**100% Natural Jackfruit pulp**

**+ No Preservatives**

**250mL e**  
8.5 fl.oz

250ml Glass Bottle with Safety Metal Lid, 100% Natural Jackfruit Pulp, No Added Preservatives, Medium Sugar with pasteurizing and Shelf Life -12 months.



**COOL JACK™**



Some people are like jackfruit hard and rude outside. Soft and sweet in inside difficult to open the outer layer to find the sweet quality of core

**Medium sugar**



[www.capceylon.com](http://www.capceylon.com)

250mL e  
8.5 fl.oz

**Glass**  
bottle  
*with*  
**safety**  
metal lid

“I’m just taking care of myself: Eating less, exercising more, drinking a lot of coconut water.”

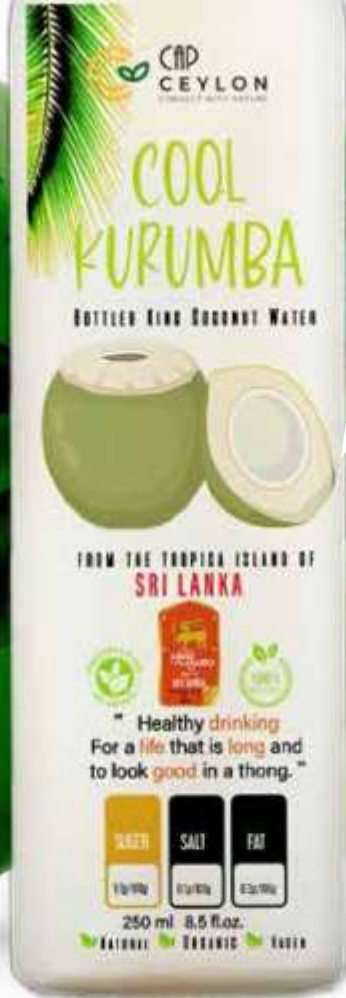


**No sugar**

**100% Natural**  
Kurumb  
awater

**COOL KURUMBA**  
BOTTLED KING COCONUT WATER

**+ No Preservatives**



**12 months**  
Pasteurization & Shelf life



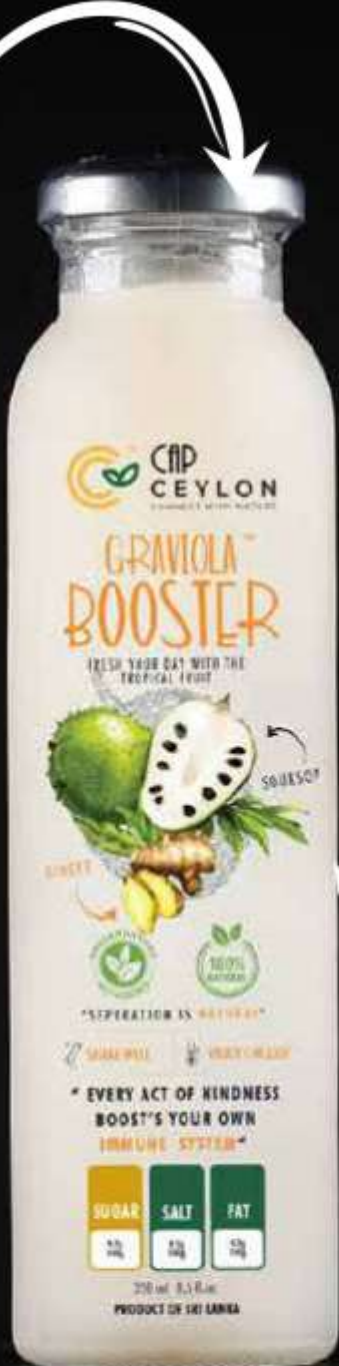
“250ml Glass Bottle with Safety Metal Lid, 100% Coconut Water, No Added Preservatives, No Added Sugar with pasteurizing and Shelf Life -12 months.”

**Glass bottle**  
with  
**safety metal lid**

**Medium sugar**

**+ No Preservatives**

**250mL e**  
8.5 fl.oz



“ Every act of kindness boost’s your own Immune System“

**12 month**  
Pasteurization and Shelf life

**100% Natural**  
Graviola Pulp & Ginger

250ml Glass Bottle with Safety Metal Lid, 100% Natural Graviola Pulp, Ginger Juice, No Added Preservatives, Medium Sugar with pasteurizing and Shelf Life -12 months.

**CAP CEYLON**  
CONNECT WITH NATURE

**GRAVIOLA BOOSTER**

REFRESH YOUR DAY WITH THE TROPICAL FRUIT



**PRESERVATIVES**  
**NATURAL INGREDIENTS**  
“SEPERATION IS NATURAL”

  
**12** month  
Pasteurization  
and Shelf life

  
**No sugar**



350ml Glass Bottle with Safety  
Metal Lid, 100% King Coconut Water  
and Kernel, No Preservatives, with  
pasteurization and Shelf Life -12  
months

**100%**  
**Natural**  
King Coconut  
water

**350mL**  
11.9 fl.oz **e**

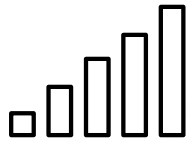
**Glass**  
bottle  
*with*  
**safety**  
metal lid

**No+**  
Preservatives

“A truly  
Tropical Healthy  
thirst  
quencher”



“A Nut  
To keep  
you  
healthy”



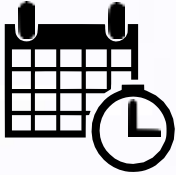
No sugar



350ml Glass Bottle with Safety Metal Lid, 100% King Coconut Water, No Preservatives, with pasteurization and Shelf Life -12 months

350mL<sup>e</sup>  
11.9 fl.oz

No<sup>+</sup>  
Preservatives



12 month  
Pasteurization  
and Shelf life



100%  
Natural

King Coconut  
water



# GRAVIOLA™ CLEANSE

REFRESH YOUR DAY WITH THE TROPICAL FRUIT



LIME

SOURSOP



“NATURAL FRUIT PUNCH”



Aluminum Cans

100% Natural Graviola Pulp & Lime

Preservatives

250ml Aluminum Cans, 100% Natural Graviola Pulp, Natural Lime juice, Added Permitted Preservatives, Medium Sugar (8g/100ml) with Shelf Life -12 months.



250mL  
8.5 fl.oz



Natural cures that tastes great





“Every act of kindness boost’s your own Immune system“

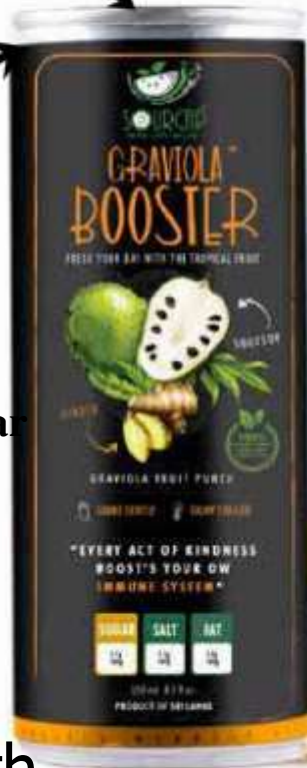
**100% Natural**  
Graviola Pulp & Ginger

**Aluminum Cans**

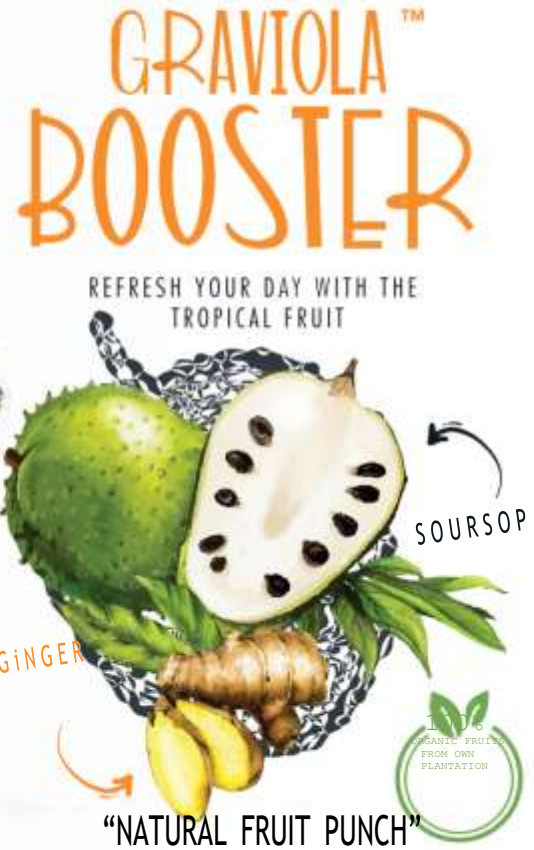
**+ Preservatives**

**Mediumsugar**

**12 month**  
Shelf Life



**250mL**  
8.5 fl.oz



“Happiness creates the highest level of good health”

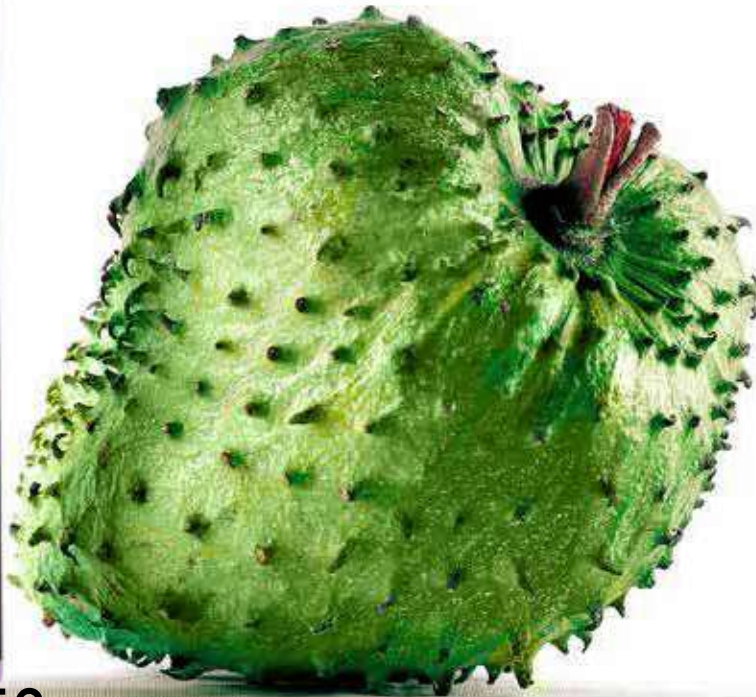
Preservatives + Aluminum Cans

100% Natural Graviola Pulp



250mL  
8.5 fl.oz e

250ml Aluminum Cans, 100% Natural Graviola Pulp, Natural Lime juice, Added Permitted Preservatives, Medium Sugar (8g/100ml) with Shelf Life -12 months.



GRAVIOLA™  
COMFORT

REFRESH YOUR DAY WITH THE TROPICAL FRUIT



“NATURAL FRUIT PUNCH”

ceylonorganiceu@gmail.com |

www.capceylon-eu.com



# GRAVIOLA EDGE™

REFRESH YOUR DAY WITH THE TROPICAL FRUIT



“NATURAL FRUIT PUNCH”

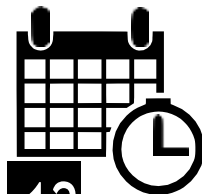


250ml Aluminum Cans, 100% Natural Graviola Pulp, Natural Lemon juice, Added Permitted Preservatives, Medium Sugar (8g/100ml) with Shelf Life -12 months.

Preservative +

Aluminum Cans

100% Natural Graviola Pulp & Lemon



12 month Shelf Life



250ml 8.5 fl.oz e

“Not All Fruits Are Created Equal”

Drink Smart, Live Smart

  
**12** month  
Pasteurization and Shelf life

**Aluminum Cans**

**Permitted Preservatives**

  
Medium sugar

**100% Natural**  
Graviola Pulp

**250mL**  
8.5 fl.oz



**ANNOLLA™**

250ml Aluminum Cans, 100% Natural Graviola Pulp, Added Permitted Preservatives, Medium Sugar (9.4g/100ml) with Shelf Life -12 months.



Little thing  
with an  
awesome  
taste

Glass  
bottle  
*with*  
safety  
metal lid



**12** month  
Pasteurization  
and Shelf life

**100%**  
Natural  
Rambutan  
pulp  
**200mL**  
6.8 fl.oz

Medium  
sugar

**No+**  
Preservatives



**RAMBUTAN**<sup>TM</sup>

250ml Aluminum Cans, 100% Natural Graviola Pulp, Natural ginger juice, Added Permitted Preservatives, Medium Sugar (8g/100ml) with Shelf Life -12 months.

Energy	Fat	Saturates	Sugar	Salt
95kcal	0g	0g	11g	0g
5%	ZERO	ZERO	MED	ZERO
	0%	0%	26%	0%

**Medium sugar**

**12 month**  
 Pasteurization and Shelf life

**Glass bottle with safety metal lid**

The latest, Rich health supplement



**WARAKA™**

200ml Glass Bottle,  
 100% Natural Jackfruit Pulp, No Preservatives,  
 Medium Sugar (11g/100ml) with Shelf Life -12 months.

**100% Natural**

**200mL e**  
 6.8 fl.oz

**Not Preservatives**



Energy	Fat	Saturates	Sugar	Salt
113 kcal	1g	0g	11g	0.1g
6%	LOW	ZERO	MED	LOW
	1%	0%	26%	3%

A Healthy Immune System Ensures A Healthy Body



Glass bottle with safety metal lid

100% Natural Soursop pulp



**ANNOLLA™**

200ml Glass Bottle, 100% Natural Soursop Pulp, No Preservatives, Medium Sugar (10g/100ml) with Shelf Life - 12 months.

12 month Pasteurization and Shelf life

Energy	Fat	Saturates	Sugar	Salt
103kcal	0.6g	0g	10g	0.08g
6%	LOW	ZERO	MED	LOW
	1%	0%	21%	3%

No Preservatives



200mL 6.8 fl.oz e




  
**12** month
   
 Pasteurization
   
 and Shelf life


  
**Medium**
  
 sugar

The daily  
health  
supplement

**Not**
  
 Preservatives

**200mL**e
   
 6.8 fl.oz

**100%**
  
**Natural**
  
 Guava pulp


**CAP**
  
**CEYLON**
  
 CONNECT WITH NATURE

**PERRA**™

200ml Glass Bottle, 100%  
 Natural Guava Pulp, No Preservatives,  
 Medium Sugar (11g/100ml) with  
 Shelf Life -12 months.

Energy <b>113</b> kcal	Fat <b>1g</b> LOW	Saturates <b>0g</b> ZERO	Sugar <b>11g</b> MED	Salt <b>0.1g</b> LOW
6%	1%	0%	26%	

A nature lovers treat

Glass bottle with safety metal lid

Not Preservatives

12 month  
Pasteurization and Shelf life

CAP CEYLON  
CONNECT WITH NATURE

ALORA™

200ml Glass Bottle, 100% Natural Alovera Pulp, No Preservatives, Medium Sugar (11g/100ml) with Shelf Life -12 months.

200mL  
6.8 fl.oz

e

Medium sugar

100% Natural

Energy	Fat	Saturated	Sugar	Salt
95 kcal	0g	0g	11g	0g
-5%	ZERO	ZERO	MED	ZERO
	0%	0%	26%	0%



**No+**  
Preservatives

**Glass**  
bottle  
*with*  
**safety**  
metal lid

**100%**  
**Natural**  
Durian pulp

**12** month  
Pasteurization and  
Shelf life

One man's  
dream another  
man's dilemma

**Medium**  
sugar

**200mL**  
6.8 fl.oz



**DOORIO**<sup>TM</sup>

200ml Glass Bottle,  
100% Natural Durian Pulp,  
No Preservatives,  
Medium Sugar (11g/100ml) with  
Shelf Life -12 months.

Energy	Fat	Saturates	Sugar	Salt
128kcal	0.2g	0g	11g	0.04g
6%	LOW	ZERO	MED	LOW
	3%	0%	26%	3%



Glass bottle with safety metal lid

No+ Preservatives



100% Natural Wood Apple pulp



200mL e  
6.8 fl.oz



12 month Pasteurization and Shelf life

Hard and ugly shell conceals a wonder

DTWUL™

200ml Glass Bottle, 100% Natural wood apple Pulp, No Preservatives, Medium Sugar (11g/100ml) with Shelf Life -12 months.

Energy 113 kcal	Fat 1g LOW	Saturates 0g ZERO	Sugar 11g MED	Salt 0.1g LOW
6%	1%	0%	26%	

Breakfast  
without  
watermelon  
juice is like a  
day without  
sunshine

**100%  
Natural**  
Watermelon  
pulp

**Glass**  
bottle  
*with*  
**safety**  
metal lid

**12** month  
Pasteurization and  
Shelf life

**No+**  
Preservatives

**200mL e**  
6.8 fl.oz



**KOMADU**<sup>TM</sup>

200ml Glass Bottle,  
100% Natural Watermelon Pulp,  
No Preservatives,  
Medium Sugar (11g/100ml) with  
Shelf Life -12 months.

**Medium  
sugar**

Energy	Fat	Saturates	Sugar	Salt
103 kcal	0g	0g	11g	0g
6%	<b>ZERO</b>	<b>ZERO</b>	<b>MED</b>	<b>ZERO</b>
	0%	0%	20%	0%



ceylonorganiceu@gmail.com |

www.capceylon-eu.com

**Glass  
bottle  
with  
safety  
metal lid**

**100%  
Natural**  
Passion Fruit pulp

Relive your  
passion with  
real life



**200mL e**  
6.8 fl.oz

**No+**  
Preservatives



**Medium  
sugar**

**PASSION™**

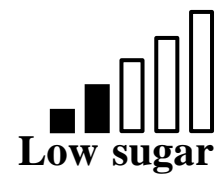
200ml Glass Bottle,  
100% Natural Passion Fruit Pulp,  
No Preservatives,  
Medium Sugar (11g/100ml) with  
Shelf Life -12 months.

**12 month**  
Pasteurization and  
Shelf life

Energy	Fat	Saturates	Sugar	Salt
121kcal	0.1g	0g	11g	0.01g
6%	LOW	ZERO	MED	LOW
	0%	0%	10%	1%

Beauty is always concealed

**100% Natural**  
Graviola Pulp,  
Lime Juice &  
Ginger



# ANNOLLA™

LITE



REFRESH YOUR DAY WITH THE TROPICAL FRUIT

**12** month  
Pasteurizing  
and Shelf life



 **CAP CEYLON**  
CONNECT WITH NATURE

250ml Glass Bottle with easily openable crownlid,  
100% Natural Graviola Pulp, Natural Lime Flavor,  
Added Permitted Preservatives, Sugar with  
pasteurization and Shelf Life -12 months

[ceylonorganicen@gmail.com](mailto:ceylonorganicen@gmail.com) | [www.capceylon.eu.com](http://www.capceylon.eu.com)

[www.capceylon.eu.com](http://www.capceylon.eu.com)

Caffeine Free



25 bags Packed with Pyramid bags

What is the special with this TEA, Itsblend with Graviola (Soursop) Leaves, Walpenala and Ashwaganda with Self Life -12 months. Packed with Pyramid Tea Bags (25 bags per pouch)



If you are cold, tea will warm you; if you are too heated, it will cool you; If you are depressed, it will cheer you; If you are excited, it will calm you.



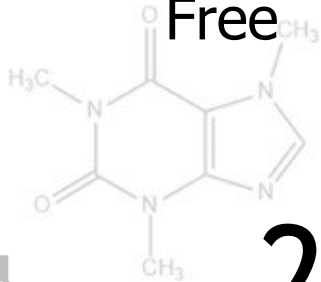
CAP NIGHT Tea



Our Graviola (Soursop) leaf tea from premium Graviola trees are non-GMO, bulk dried, and packed in individual tea bags to ensure thefresh tea in possibly every cup. It's our way of saying we care. \*Caffeine Free. Graviola leaves are beneficial in supporting healthy cell growth and regeneration. It helps maintain a strongimmune system aidingnormal cell function. Create a relaxed and calm positive mood. Promoting healthy sleep.



Caffeine Free



**24** month  
Shelf Life

**25** bags  
Packed with  
Pyramid bags

# Where there's Graviola leaf tea, there's hope



## CAP ESSENTIAL *Tea*

Our Graviola leaves (soursop) tea from premium Graviola trees are non-GMO, bulk dried, and packaged in individual tea bags to ensure the freshest tea possible in every cup. It's our way of saying we care. \*Caffeine Free. Graviola leaves are beneficial in supporting healthy cell growth and regeneration. Maintaining a strong immune system function. Aiding normal cell function. Maintaining a relaxed and calm positive mood. Promoting restful and healthy sleep. Why we are unique 75% women owned and operated.

What is the special with this TEA, Its blend with Graviola (Soursop) Leaves and Katupila with Self Life -12 months. Packed with Pyramid Tea Bags (25 bags per pouch)





# Rest & Relax™

with soursop leaves

**If you are cold,**  
tea will warm you;  
**if you are too heated,**  
it will cool you;  
**If you are depressed,**  
it will cheer you;  
**If you are excited,**  
it will calm you.



What is the special with this TEA, Its blend with Graviola (Soursop) Leaves, Walpenala and Ashwaganda with Self Life -12 months. Packed with Pyramid Tea Bags (25 bags per pouch)

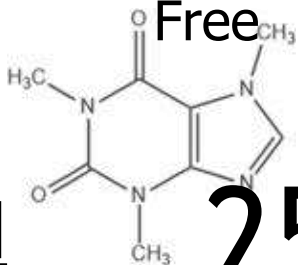


# 25 bags

Packed with Pyramid bags

Our Graviola leaves (soursop) tea from premium Graviola trees are non-GMO, bulk-dried and packaged in individual tea bags to ensure the freshest tea possible in every cup. It's our way of saying we care. \*Caffeine Free. Graviola leaves are beneficial in supporting healthy cell growth and regeneration. Maintaining a strong immune system function. Aiding normal cell function. Maintaining a relaxed and calm positive mood. Promoting restful and healthy sleep. Why wear unique 75% women- owned and operated.

Caffeine Free



25 bags  
Packed with Pyramid bags



# Graviola Tea is the magic key to the vault where my brain is kept



What is the special with this TEA, Its blend with Graviola (Soursop) Leafs and Katupila with Self Life -12 months. Packed with Pyramid Tea Bags (25 bags per pouch)



100%  
Natural  
herbs

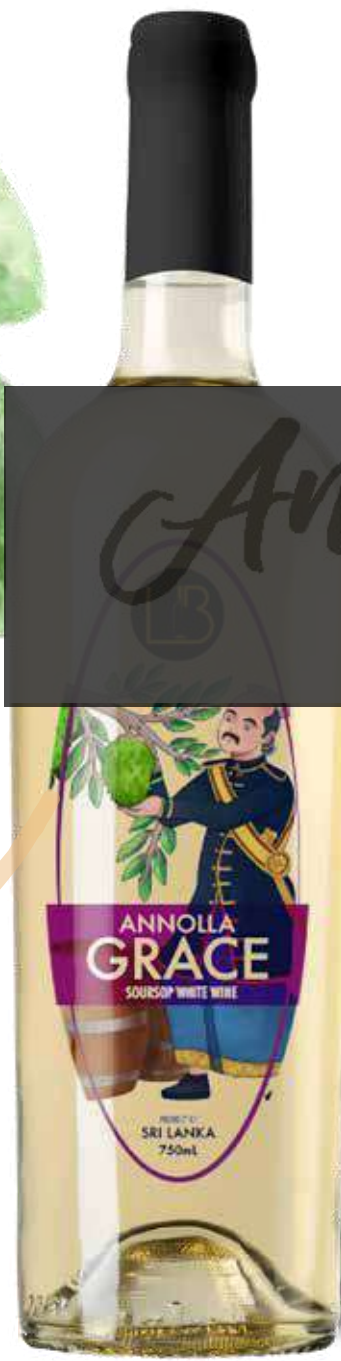
# Wine

Rich in Vitamin C, Soursop Super fruit is an antioxidant that has anti cancer and antibacterial effects



750 ml glass bottle, Where wine is Made with 100% Graviola pulp

[www.capceylon-eu.com](http://www.capceylon-eu.com)



“Thousands of wines can take over our minds. Not all ecstasies are the same!”



Health  
Benefits

- Anti-diabetic activity
- Comparatively less glucose level
- Antioxidant activity

Soursop based medicated wine

750mL e | Alcohol 10%

# GRAVIOLA

CRISPY CRACKERS

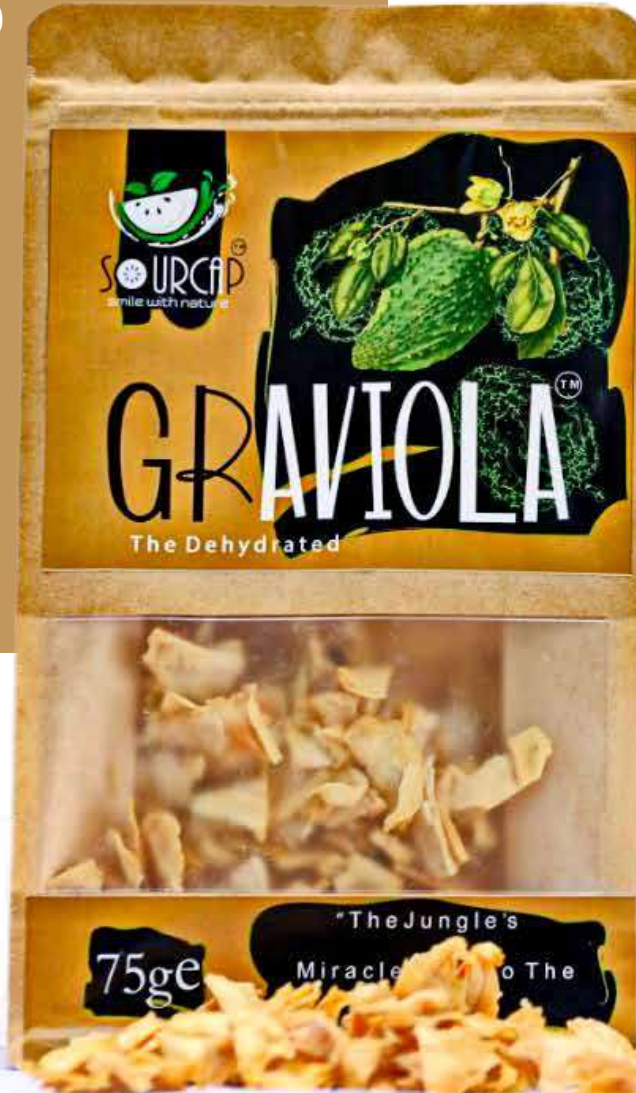


“The driver is safer when the roads are dry; the roads are safer when the driver is dry”

12 month  
Shelf life

Graviola Dehydrated (No Added sugar or salt) with 100gm Kraft Bags with Shelf Life - 12 months.

100ge



# Surprising Health Benefits of the Graviola

It is a Superfruit

Graviola (*Annona muricata*), also known as Soursop, is a small evergreen tree with many bioactive compounds, that is native to the Amazon Rainforest and other tropical areas of the Americas. It produces a large, heart-shaped edible fruit which is yellow-green colour, with white flesh.

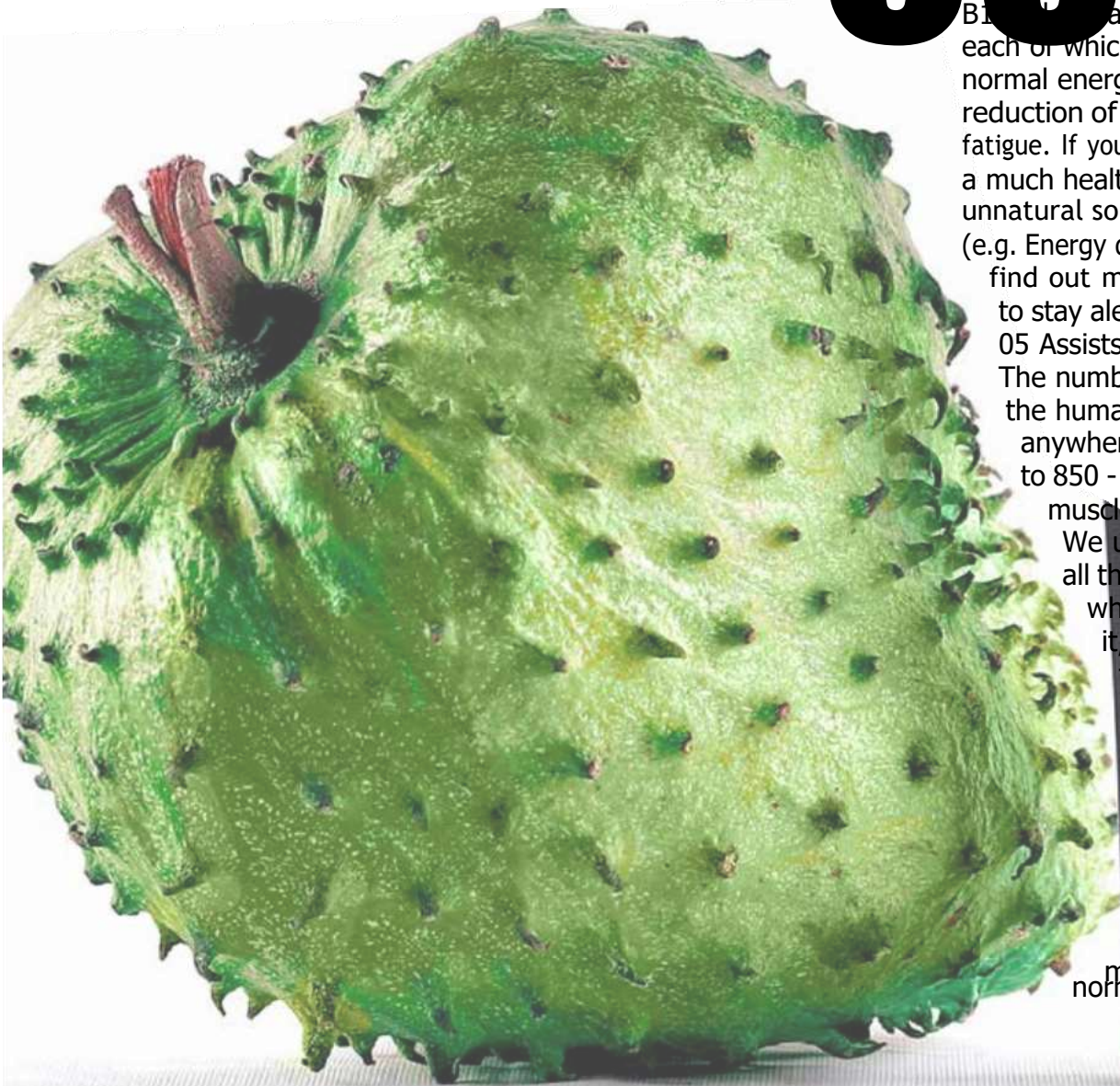
In Brazil, the juice is a popular drink known as Guanábana. Although it's only recently become popular in the West, Graviola has a long history in ancient herbal remedies and treatments, with the leaf, stem, root, bark and seed all used traditionally. Since ancient times, it has become known that Graviola is rich in vitamins and minerals, all of which contribute to the health benefits it provides:

**O** Source of antioxidants

Not only does Graviola contain a bounty of vitamins and minerals, but the stem, bark and leaves are rich in antioxidants, which help the body fight against free radical damage to cells.

**O** May regulate blood glucose

Certain ingredients in Graviola include phytochemicals, which may help to regulate blood glucose levels and prevent spikes. Maintaining a healthy blood sugar level is important because it can help protect the vessels that supply blood to important organs, such as the heart.



# 03

## Contributes to energy levels

Graviola contains Vitamins B1, B6 and Magnesium, each of which contributes to normal energy levels and the reduction of tiredness and fatigue. If you're flagging, they're a much healthier alternative to unnatural sources of caffeine (e.g. Energy drinks). You can find out more about how to stay alert naturally here.

05 Assists muscle function  
The number of muscles in the human body can range anywhere between 640 to 850 - that's a lot of muscles to support!

We use our muscles all the time, even when we don't know it, so making sure they have the support they need is essential.

Graviola contains Potassium and Calcium, both of which contribute to the maintenance of normal muscle function

# 04

## Helps support the immune system

A healthy immune system is essential for helping the body to fight any nasties and keep illnesses at bay. Vitamin B1 and Zinc (both of which can be found in Graviola) can give the immune system a helping hand. Graviola leaf is said to be high in antioxidants.

# 05

## Assists muscle function

The number of muscles in the human body can range anywhere between 640 to 850 - that's a lot of muscles to support! We use our muscles all the time, even when we don't know it, so making sure they have the support they need is essential. Graviola contains Potassium and Calcium, both of which contribute to the maintenance of normal muscle function.

# Why Graviola

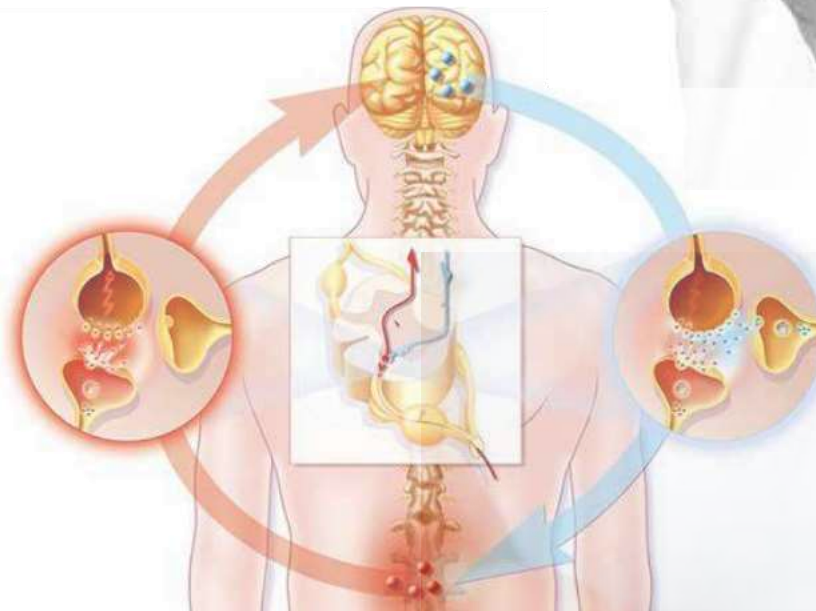
## NATURAL CURE FOR ARTHRITIS AND RHEUMATISM

The topical application of this infusion is known to ease the pain and inflammation experienced due to arthritis and rheumatism. You can dip a clean cloth in warm tea and apply it on to the affected area, twice a day, to enjoy better relief..



## BENEFICIAL FOR HEART AND PREVENTS NERVE DAMAGE

Vitamin B1 in soursop accelerates metabolism, blood circulation and prevents nervous disorders. It also contains vitamin B2, which is vital for the body's energy production, fat storage, the functioning of the nervous system and maintenance of heart muscle.



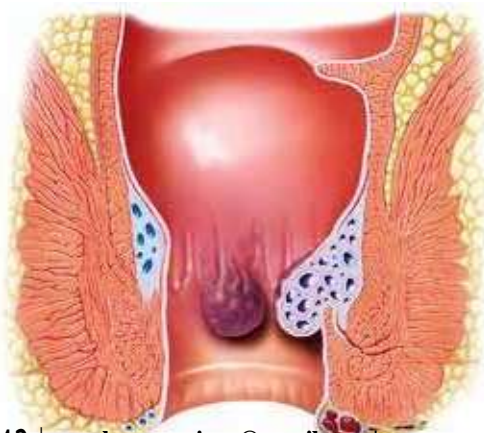
## TREATMENT OF FEVER

Tea made from soursop helps to lower the body temperature. In Africa, children were often bathed in Soursop leaves to cure fever.

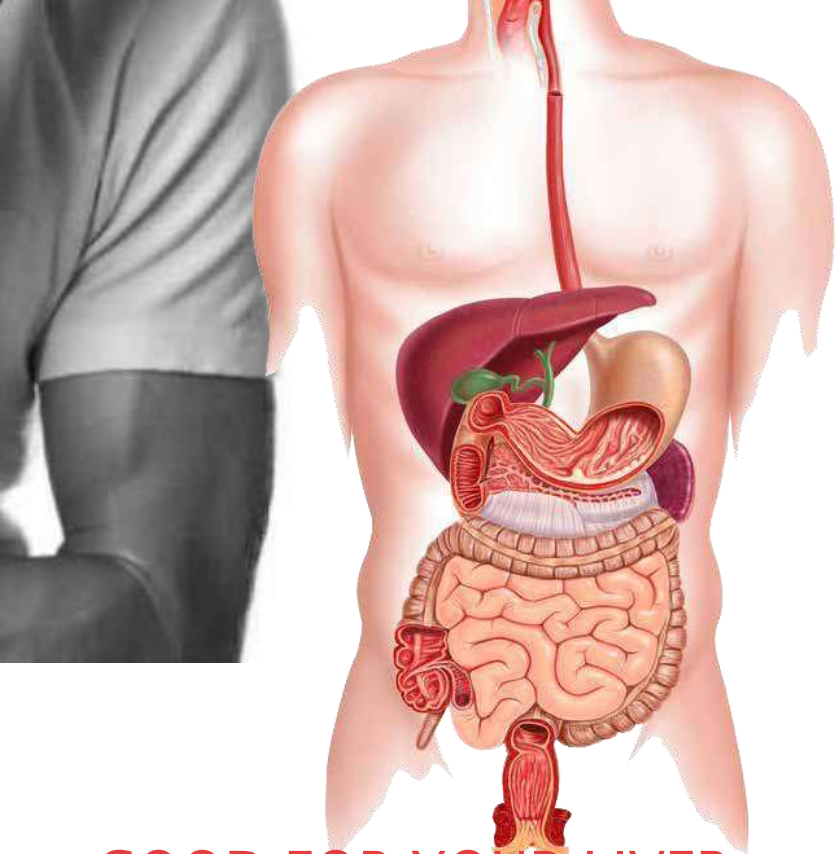


## TREATMENT OF HEMORRHOID AND INFANT DIARRHEA

Soursop is effective in curing hemorrhoids. For this purpose, squeeze the fruit to take out at least one glass of water and drink it twice a day in the morning and afternoon for relief. In the case of infant diarrhea, 2-3 tablespoons of this water should be given to infants.







## RELIEVES CONSTIPATION

Since the fruit is rich in soluble and insoluble fibers it relieves constipation by adding bulk to stool and facilitating its easy elimination from the body



## PROMOTES SLEEP

Soursop fruit contains a chemical called tryptophan, which promotes sleepiness and relaxation. It is thus, beneficial for insomniacs. Soursop leaves are often used in aromatherapy and infusions for sleep. Soursop fruit helps in controlling blood pressure and hypertension.

## GOOD FOR YOUR LIVER

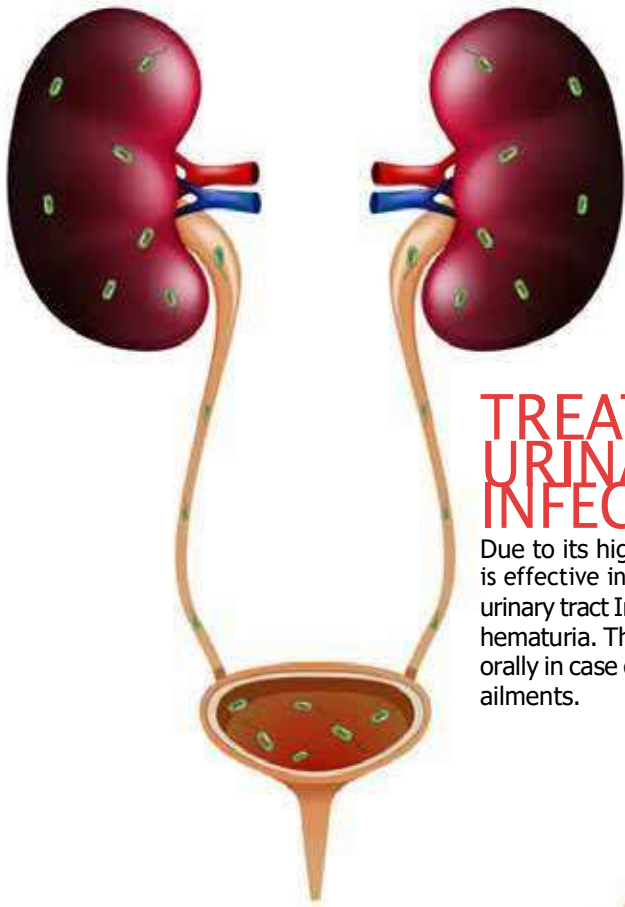
The tea made from soursop leaves is known to be a liver tonic. Along with losing the liver disorders, it also shields the liver. It is also ideal to treat diseases affecting the gallbladder, including gallstones



## NATURAL DIURETIC

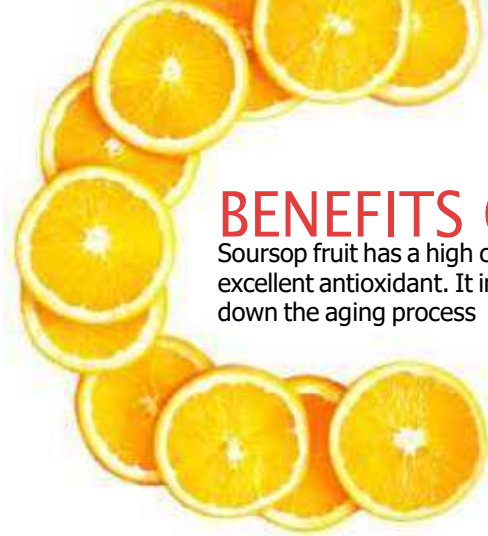
The flesh of this fruit is nearly 84% water which hydrates your body. It acts as a natural diuretic to treat edema or retention of water





## TREATMENT OF URINARY TRACT INFECTIONS

Due to its high moisture content soursop is effective in treating and preventing urinary tract Infections (UTI), urethritis and hematuria. The juice of the fruit can be taken orally in case of urethritis, hematuria and liver ailments.



## BENEFITS OF VITAMIN C

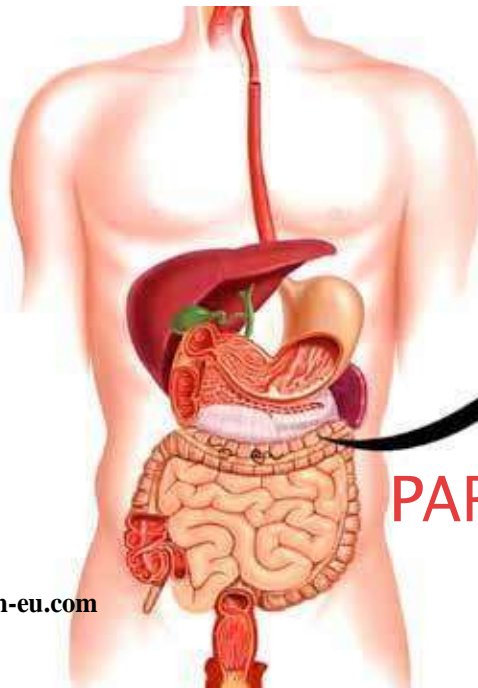
Soursop fruit has a high content of vitamin C which is an excellent antioxidant. It increases endurance and slows down the aging process

## FIGHTS FREE RADICALS

The ascorbic acid in soursop fruit increases the number of antioxidants in the body which play an important role in fighting the free radicals, thereby keeping several infections and disorders at bay.

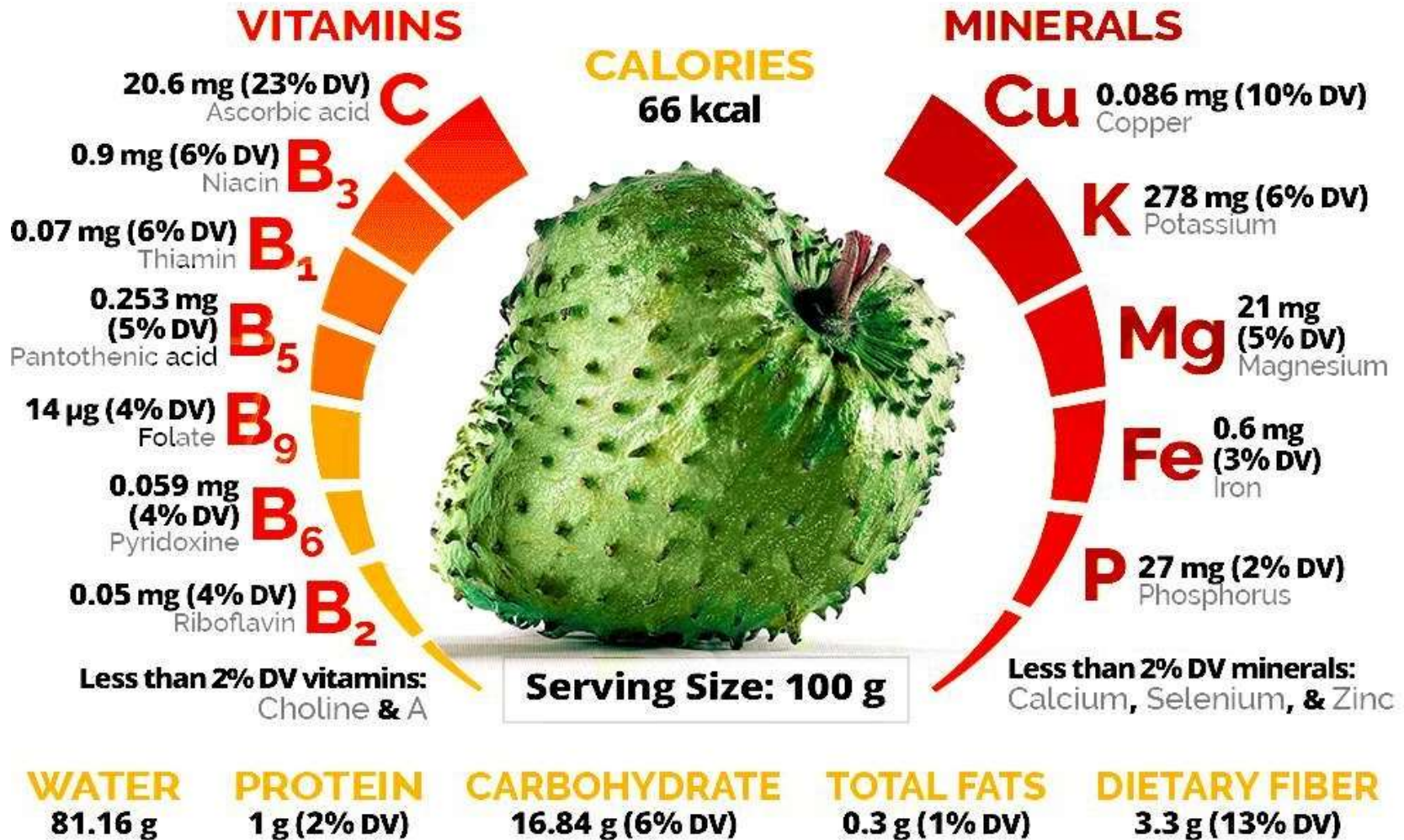
## RELIEVES PAIN

The leaves of the soursop plant are believed to have analgesic properties that can relieve pain. These leaves are often chewed or applied to open wounds Their juice is effective in healing the wound while relieving pain from an injury. In case of excess pain, boil 20 soursop leaves in 5 cups of water to 3 cups are left and drink 3/4 cup of this concoction once in a day for relief.



## KILL PARASITES INSIDE

The Body Soursop is loaded with nutrients that are vital for the overall development of the body. The nutrients amino Acids, ascorbic acid calcium carbohydrates on phosphorus thiamine, fibers and riboflavin can inhibit parasites inside the body



# HEALTH BENEFITS OF SOURSO

## 01 Diabetes

Drinking tea made from soursop can help lactating mothers to produce more milk. The hypoglycemic properties of the soursop can help regulate the level of blood sugar of a diabetic person. There are no side effects of drinking the soursop.

## 02 High Blood Pressure

The hypotensive properties found in the soursop are said to be an effective natural alternative for people suffering from hypertension.

## 03 Milk Production

Drinking tea made from soursop can help lactating mothers to produce more milk.



more details

## 04 Antimicrobial Properties

Scientific studies show that soursop has the following antimicrobial properties:

Antimalarial		Antiphrostatic
Antiviruses		Antibacterial

# 05

## Bone Health

Soursop leaves contain at least 25 percent calcium, which plays an integral part in keeping the bones strong and healthy



# 06

## Energy Booster

Thiamine can be found in soursop. This essential vitamin converts the sugar in the human body into energy.



# 07

## Herpes

People suffering from herpes should drink soursop leaves tea in order to prevent outbreaks.

# 08

## Stress reliever

Just like chocolates and other sugary foods, soursop can fix a woebegone mood.



# 09

## Nerves

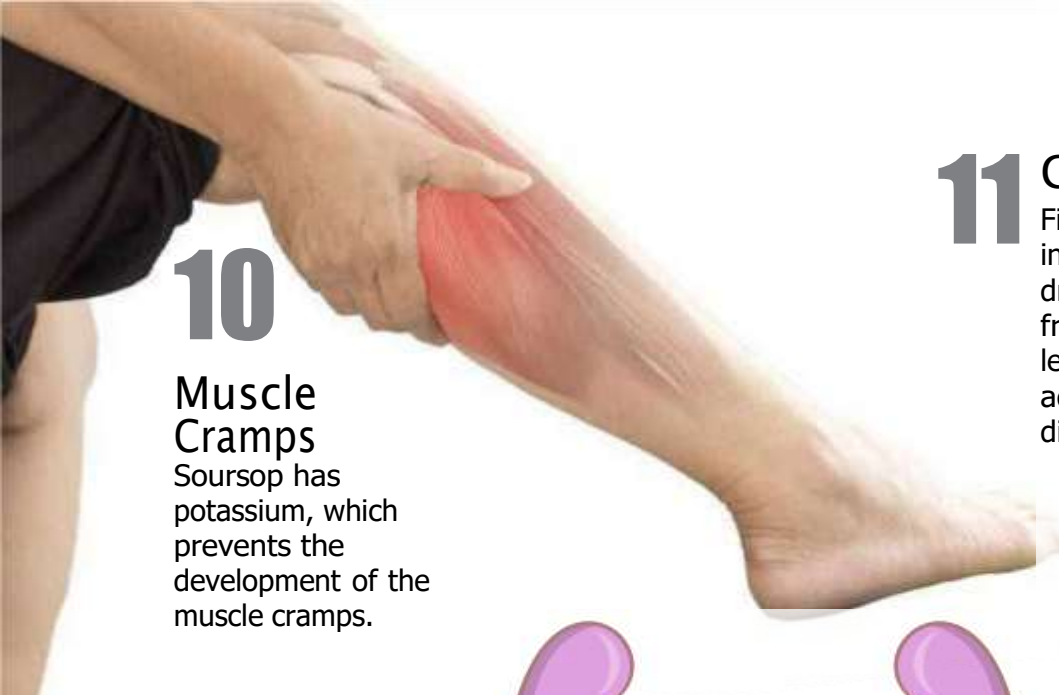
Tension nerves can appear anytime. So in order to keep the nerves, calm drinking soursop can be the immediate and natural solution



# 10

## Muscle Cramps

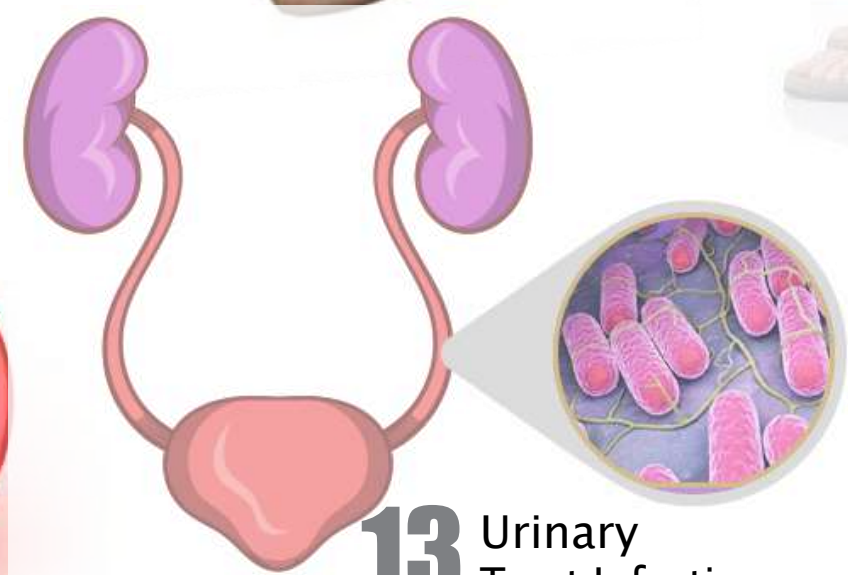
Soursop has potassium, which prevents the development of the muscle cramps.



# 11

## Constipation

Fiber is present in every soursop drinking tea made from soursop leaves that can address this digestive problem.



# 13

## Urinary Tract Infection

According to scientific research, vitamin C stops the accumulation of bacteria in the urinary tract of the human body. Thus, preventing the development of an infection. The soursop contains vitamin C.

# 12

## Cholesterol Count

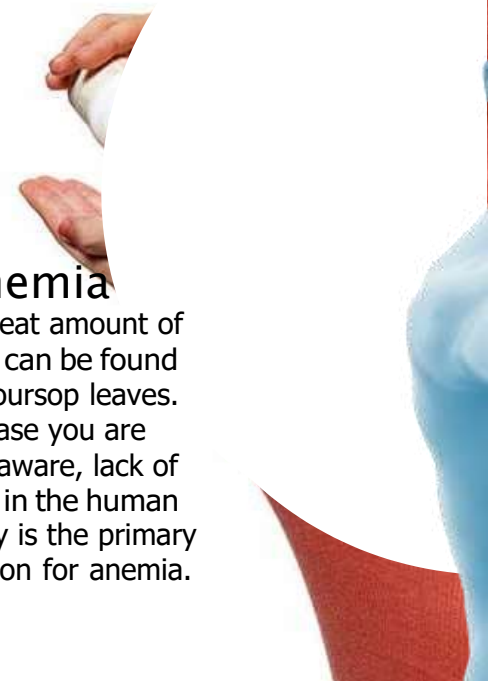
The niacin found in the soursop can help regulate the bad cholesterol, as well as boosting the good cholesterol.

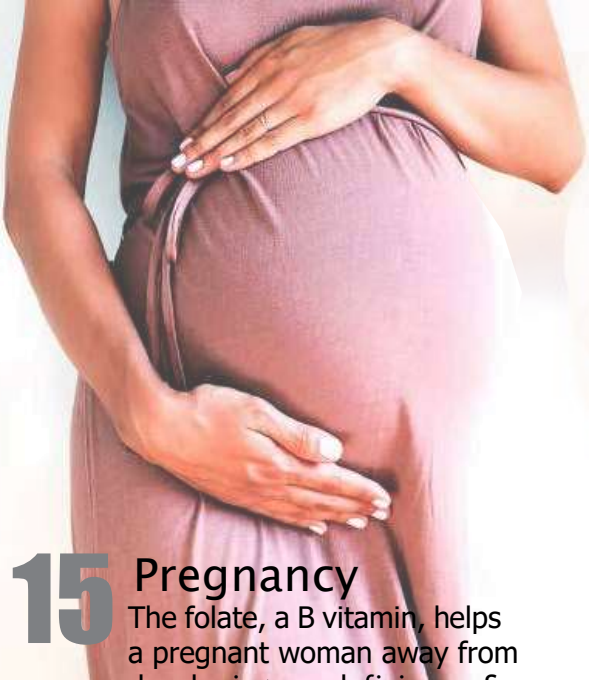


# 14

## Anemia

A great amount of iron can be found in soursop leaves. In case you are not aware, lack of iron in the human body is the primary reason for anemia.





## 15 Pregnancy

The folate, a B vitamin, helps a pregnant woman away from developing any deficiency. Soursop contains folate.



## 20

### Anticarcinogenic Properties

According to the Journal of Natural Products, the soursop fruits & leaves are considered 10,000 times more effective than the Adriamycin, a drug used in chemotherapy.



## 16

### Migraine

The excruciating pain brought by a migraine is so annoying. The riboflavin present in soursop leaves can address this problem.



## 19

### Doresopathy

Back pain can be lessened when drinking soursop leaf tea & fruit juice.



## 18

### Immune System Booster

In order to improve the function of the

immune system, drinking soursop leaves tea & fruit juice can be a great idea. Researchers have found that soursop leaf tea can help contribute to fat loss by increasing the body's metabolism.



## 17

### Rheumatoid Arthritis

The painful sensation throughout the body caused by rheumatoid arthritis can be relieved by using soursop.





The soursop tree is low-branching and bushy but slender because of its up-turned limbs and reaches a height of 25 or 30 ft (7.5-9 m). Young branchlets are rusty-hairy. The malodorous leaves, normally evergreen, are alternate, smooth, glossy, dark green on the upper surface, lighter beneath; oblong, elliptic or narrowly obovate, pointed at both ends, 2 1/2 to 8 in (6.25-20 cm) long and 1 to 2 1/2 in (2.5-6.25 cm) wide. The flowers, which are borne singly, may emerge anywhere on the trunk, branches or twigs. They are short stalked, 1 1/2 to 2 in (4-5 cm) long, plump, and triangular-conical, the 3 fleshy, slightly spreading, outer petals yellow-green, the 3 close-set inner petals pale-yellow.

The fruit is more or less oval or heart-shaped, sometimes irregular, lopsided or curved, due to improper carper development or insect injury. The size ranges from 4 to 12 in (10-30 cm) long and up to 6 in (15 cm) in width, and the weight may be up to 10 or 15 lbs (4.5-6.8 kg). The fruit is compound and covered with a reticulated, leathery-appearing but tender, inedible, bitter skin from which

protrude few or many stubby, or more elongated and curved, soft, pliable "spines". The tips break off easily when the fruit is fully ripe. The skin is dark-green in the immature fruit, becoming slightly yellowish-green before the mature fruit is soft to the touch. Its inner sur-

face is cream-colored and granular and separates easily from the mass of snow-white, fibrous, juicy segments—much like flakes of

raw fish—surrounding the central, soft-pithy core. In aroma, the pulp is somewhat pineapple-like, but its musky, subacid to acid flavor is unique. Most of the closely-packed segments are seedless. In each fertile segment, there is a single oval, smooth, hard, black seed, 1/2 to 3/4 in (1.25-2 cm) long; and a

# Graviola in the world





na. It was one of the first fruit trees carried from America to the Old World Tropics where it has become widely distributed from southeastern China to Australia and the warm lowlands of eastern and western Africa. It is common in the markets of Malaya and Southeast Asia. Very large, symmetrical fruits have been seen on sale in South Vietnam. It became well

established at an early date in the Pacific Islands. The tree has been raised successfully but has never fruited in Israel. In Florida, the soursop has been grown to a limited extent for possibly 110 years. Sturtevant noted that it was not included by Atwood among Florida fruits in 1867 but was listed by the American Pomological Society in 1879. A tree fruited at

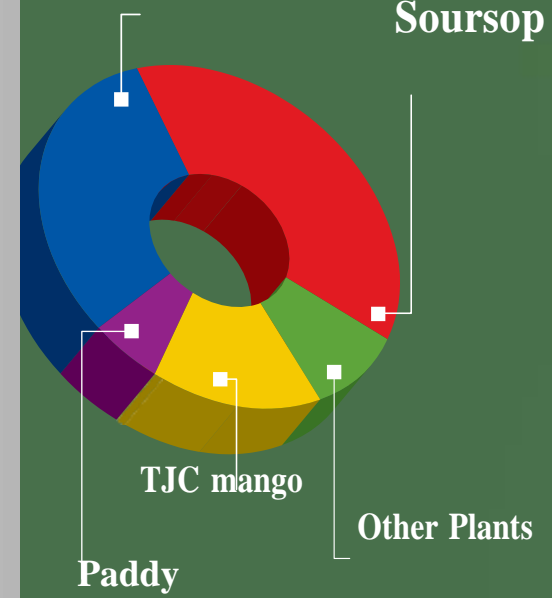
the home of John Fogarty of Manatee before the freeze of 1886. In the southeastern part of the state and especially in the Florida Keys, it is often planted in home gardens.

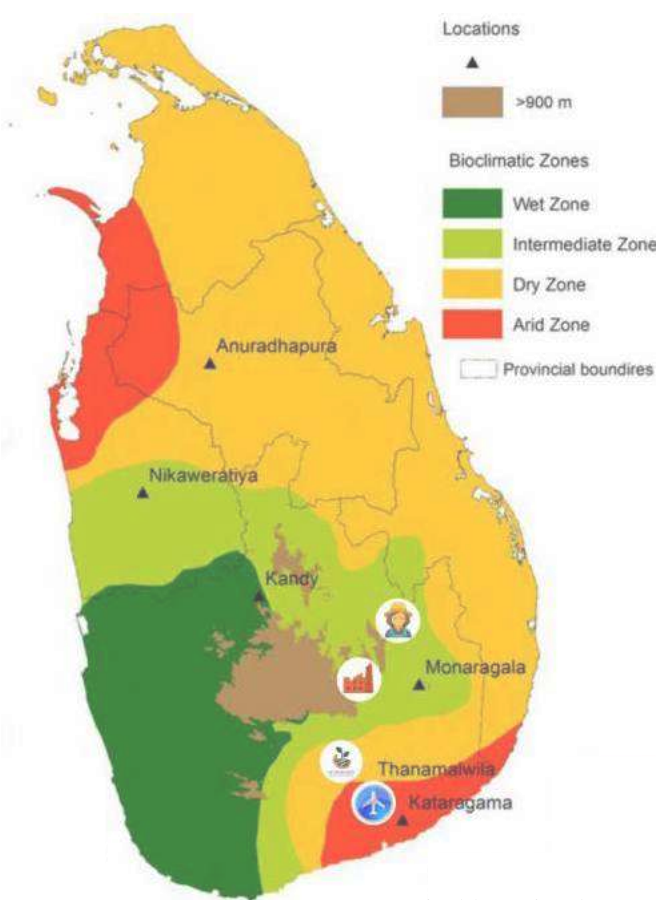
# Total land extends

52 acres



## Proposed Jackfruit & Soursop Cultivation



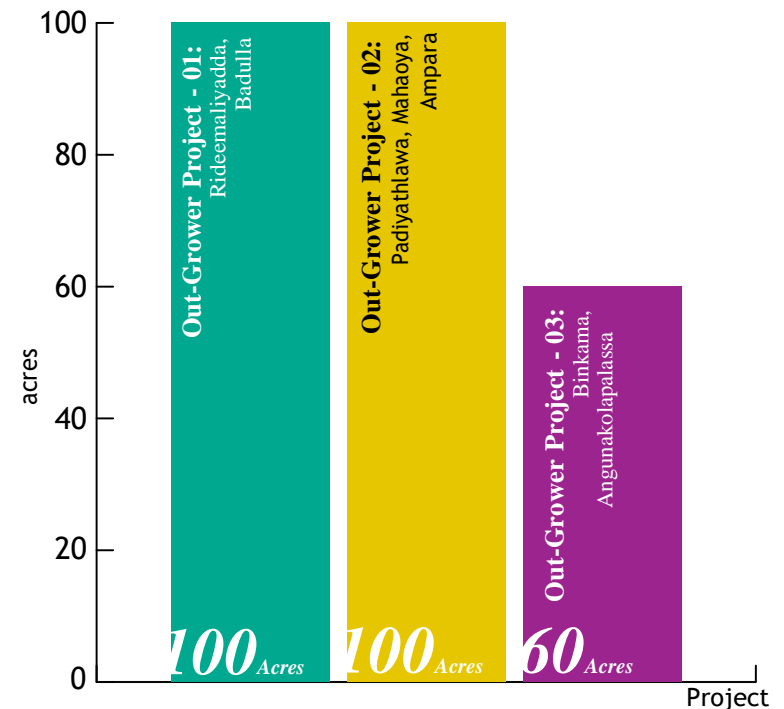


A sustainable project by  
CAP Green Forest (Pvt) Ltd.

# Out-Grower Project

(with Ministry of Agriculture & SAPP)

We have started two projects with MOA (The Ministry of Agriculture) & SAPP (Smallholder Agribusiness Partnerships Programme) as a business the promotor Social and Economic Development priority is paramount in the people of Monaragala district. The women population has recorded around 49% of the total population of the district. By considering the above situation, CAP Green Forest Private Limited has kept the initial step to uplift 500 women Farmers in Monaragala with the support of the CAP Farmer Foundation and later to increase up to 3000. Women Farmer the Monaragala Association (WFMA) was established in May 2017 and the organization is located in the area of Monaragala district of Sri Lanka. WFMA believes rural minority women have often been neglected in terms of social and economic development and the lack of resources has stagnated rural development. WFMA is the first woman owned and operated association in the area of Monaragala that aiming women's social and economic development through cultivation.



i) How We Support Them - Out Grower by back system

As per the proposed system, the social and economic wellbeing of the selected women are expected to uplift. The selected women farmers are given technical knowledge, training and Support. Then we supply Plants materials. Their Responsibility to plant and care until harvesting and by buy back by from us with a guaranteed price. Also, this is not a full-time job that they need to engage while taking harvesting then can take another regular income with other intercrops or work as a paid farmer in our largescale land when we needed.

ii) Vision and Mission

*“Economic Empowerment and eliminate poverty by increasing the Women’s income and wellbeing through, regional grown Fruits & vegetables while expanding income opportunities “*

iii) Objectives /goals

- a. We strive to meet the needs of a growing population, to protect and preserve their farms, to help improve their lives while making agriculture more viable and rewarding
- b. To produce natural and environmentally friendly products
- c. To promote high nutritious and medical value added agricultural products
- d. Creating a profitable market for the products



- e. To extend and contribute technical knowledge to farmers and upgrade their agricultural practices
- f. To strengthen the productive capacity of the women members.
- g. To create a sense of awareness for the women folk towards sustainable agriculture production
- h. To corporate between our small business units (CAP Green Forest, Farmers Foundation, WMEC) which can lead to the best image in the mind of stakeholders as farmers, community, employees, shareholders and government in the long term.

# CAP Plan Processing (Mo t naragala Mini Economic Center Development Project)







# Shipping Details

Product Name	Product Number	UOM (Box)
Annolla Comfort - (Premium)	CFP01	12 pieces per cartoon (19.6x22.7x16.4cm) 6kg
Annolla Cleanse - (Premium)	CLP02	12 pieces per cartoon (19,6cm x 22,7cm x 16,4cm) 6kg
Cool Jack - (Premium)	CJP03	12 pieces per cartoon (19,6cm x 22,7cm x 16,4cm) 6kg
Annolla "Soursop Punch"	CANP03	12 pieces per cartoon (23cm x 13cm x 14cm) 4kg
CAP Cool King - (Premium)	CKP04	12 pieces per cartoon (19,6cm x 22,7cm x 16,4cm) 6kg
CAP Cool King (Pro)	CKP05	24 pieces per cartoon (45cm x 32cm x 20cm) 18kg
CAP Immune TEA	TEA03	50 units per cartoon
CAP Essential TEA	TEA01	50 units per cartoon
Graviola Crispy Crackers	DHS01	100 pieces per cartoon 10kg
Annolla - Soursop Shot	ASS01	12 pieces per cartoon (19,6cm x 22,7cm x 16,4cm) 6kg
Waraka - Jackfruit Shot	WJS02	12 pieces per cartoon (19,6cm x 22,7cm x 16,4cm) 6kg
Soursop Wine (Annolla Graze) "White Wine" - Medicated	WINE01	24 Bottles per cartoon
PineApple Sauce - Pine Sauce	SAP01	12 pieces per cartoon (19,6cm x 22,7cm x 16,4cm) 6kg
Scotch Bonnet Sauce - Nai Miris Sauce	SAN02	12 pieces per cartoon (19,6cm x 22,7cm x 16,4cm) 6kg

Minimum Order Quantity (Boxes)	Shipping Method (EMS, DHL, Air, Sea)	Products ready in days	Trade Terms (EXW,FOB, CNF, CIF, DDU, DDP, DAP etc)	Payment Terms (TT, LC, DA/DP)
160	As per the order	14 days	EXW,FOB, CNF, CIF, DDU, DDP, DAP	1.) 50% advance paymnet on conformation the order 2.) Balance payment on TT or LC
160	As per the order	14 days	EXW,FOB, CNF, CIF, DDU, DDP, DAP	1.) 50% advance paymnet on conformation the order 2.) Balance payment on TT or LC
160	As per the order	14 days	EXW,FOB, CNF, CIF, DDU, DDP, DAP	1.) 50% advance paymnet on conformation the order 2.) Balance payment on TT or LC
160	As per the order	14 days	EXW,FOB, CNF, CIF, DDU, DDP, DAP	1.) 50% advance paymnet on conformation the order 2.) Balance payment on TT or LC
160	As per the order	14 days	EXW,FOB, CNF, CIF, DDU, DDP, DAP	1.) 50% advance paymnet on conformation the order 2.) Balance payment on TT or LC
75	As per the order	14 days	EXW,FOB, CNF, CIF, DDU, DDP, DAP	1.) 50% advance paymnet on conformation the order 2.) Balance payment on TT or LC
1	As per the order	21 days	EXW,FOB, CNF, CIF, DDU, DDP, DAP	1.) 50% advance paymnet on conformation the order 2.) Balance payment on TT or LC
1	As per the order	21 days	EXW,FOB, CNF, CIF, DDU, DDP, DAP	1.) 50% advance paymnet on conformation the order 2.) Balance payment on TT or LC
1	As per the order	21 days	EXW,FOB, CNF, CIF, DDU, DDP, DAP	1.) 50% advance paymnet on conformation the order 2.) Balance payment on TT or LC
160	As per the order	14 days	EXW,FOB, CNF, CIF, DDU, DDP, DAP	1.) 50% advance paymnet on conformation the order 2.) Balance payment on TT or LC
160	As per the order	14 days	EXW,FOB, CNF, CIF, DDU, DDP, DAP	1.) 50% advance paymnet on conformation the order 2.) Balance payment on TT or LC
100	As per the order	14 days	EXW,FOB, CNF, CIF, DDU, DDP, DAP	1.) 50% advance paymnet on conformation the order 2.) Balance payment on TT or LC
160	As per the order	14 days	EXW,FOB, CNF, CIF, DDU, DDP, DAP	1.) 50% advance paymnet on conformation the order 2.) Balance payment on TT or LC
160	As per the order	14 days	EXW,FOB, CNF, CIF, DDU, DDP, DAP	1.) 50% advance paymnet on conformation the order 2.) Balance payment on TT or LC

# Shipping Arrangement



# Glass Bottles

**Volume** = 1 Pallet (1.1m x 1.1m x 1.6m = 1.94 CMB)  
**1 Pallet** = 210 Cartons ( Carton - 165mm (W) x 225mm (L) x 195mm (H)) 6kg)  
**Total** = 2520 Bottles/Pallet (210cartons x12 Bottles) Aprox.  
**Gross Weight** = 1260kg/Pallet

Volume = 1 x 20ft = 10 Pallets | 10 Pallets = 2100 Cartons  
Total 25,200 Bottles/20ft | Aprox. Gross Weight - 12,600kg

# Aluminum Cans

**Volume** = 1 Pallet (1.0m x 1.2m x 2m = 2.40 CMB)  
**1 Pallet** = 330 Cartons ( Carton - 165mm (W) x 225mm (L) x 195mm (H)) 3.500kg)  
**Total** = 3960 Cans/Pallet (330cartons x12 Cans)  
**Aprox. Gross Weight** = 1155kg/Pallet  
**1 CMB** = 137 Cartons (Total 482kg/CBM)  
**Total** = 1644 Cans/CMB (137cartons x12 Bottles)  
**Aprox. Gross Weight** = 482kg/CBM

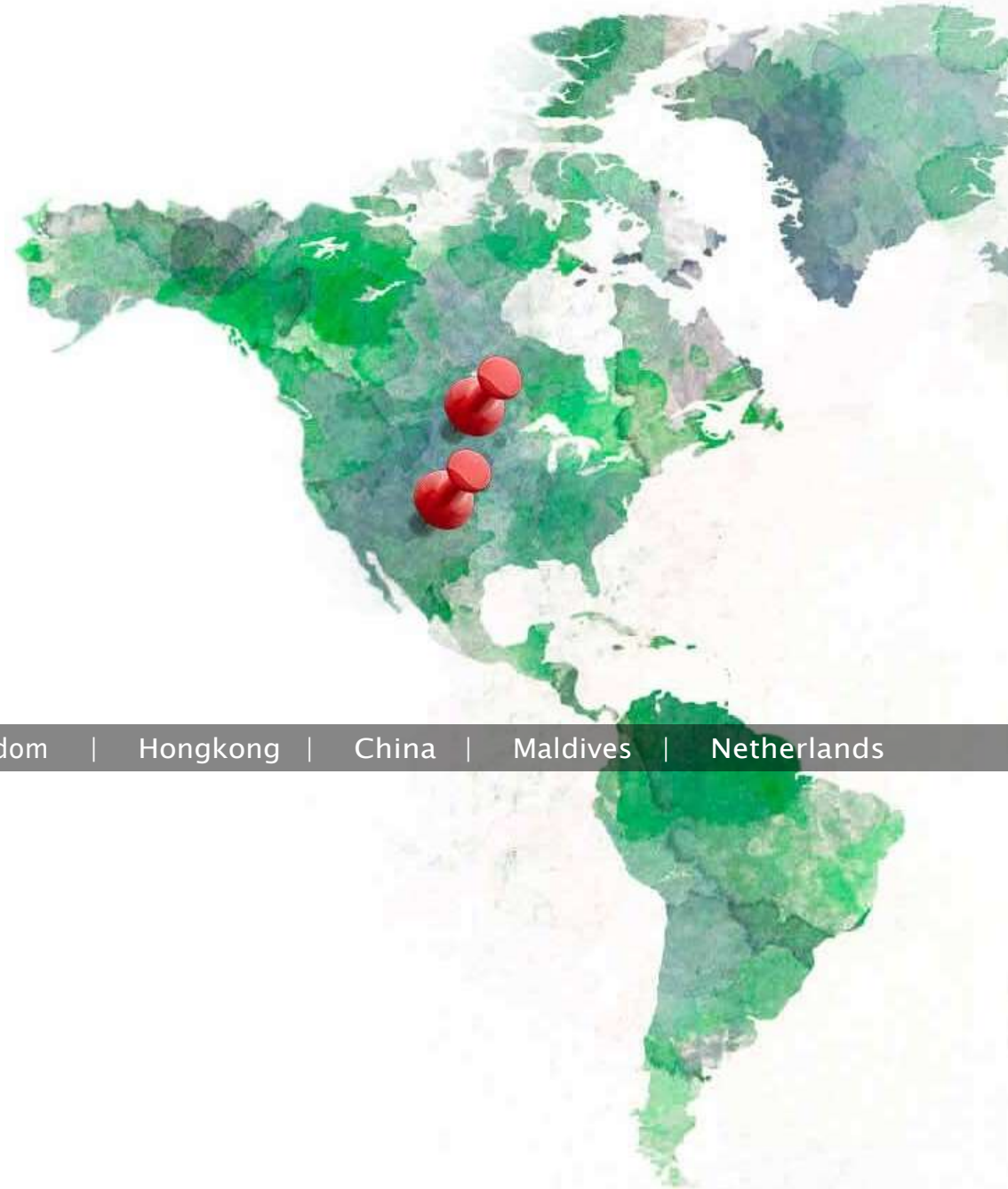
Volume = 1 x 20ft = 10 Pallets | 10 Pallets = 3300 Cartons  
Total 39,600 Cans/20ft | Aprox. Gross Weight - 11,550kg

# CAP Herbal Tea

**Volume** = 1 Pallet (1.0m x 1.2m x 2m = 2.40 CMB)  
**1 Pallet** = 29 Cartons  
(29cartons x 50 pouches/Canister - 395mm (W) x 445mm (L) x 390mm - 3.500kg)  
**Total** = 1450 Pouches/Pallet (29cartons x 50 pouches)  
**Aprox. Gross Weight** = 102kg/Pallet  
**1 CMB** = 12 Cartons

Volume = 1 x 20ft = 10 Pallets | 10 Pallets = 290 Cartons  
Total 14,500 pouches/20ft | Aprox. Gross Weight - 1150kg

# Our current business partners



Australia | Canada | United State | United Kingdom | Hongkong | China | Maldives | Netherlands



New Zealand | Czech Republic

# Road Map

CEO of CAP Organic visited Northland on August 2018 to attend the Horticulture Agri conference. He has met Mr. Wim Damsteegt, Partner & CEO of Dutch Greenery in the Netherlands (The largest seed manufacturing company in the world)



CEO of CAP Organic visited India in November 2018 to attend post harvesting conference. He has met Mr. Ashvin Sunny, chairman of AGRIPLAST (Largest greenhouse manufacture in south Asia)



Mr. Jeroen Baas Partner and Post harvesting specialist of Baas Agricultural Services -Thailand has visited the CAP Green farm and given to worth instruction to harvesting and post harvesting technology to protect our crops.





We, CAP Organic has made a strong agreement between Norwegian and Chinese company to trade and marketing our value-added product in their countries.

Several meetings and negotiations had with both parties, the finally all have come to the final decision. So in 2021, our products will be sold in the worldwide.



The Managing director of The Graviola Tea Company in the USA visited our farm in February 2019 and inspected the soursop plantation and Gaviola leaf tea making process. We, CAP Organic and The Graviola Tea Company made a strong agreement, We are exporting every month Graviola leaf tea to the USA

## The Norwegian specialist visited our land in 2016

The Norwegian Crop specialist visited our lands and gave to valuable advice on how to do 100% organic cultivation





# CEO of CAP Organic visited China to attend International Canton Fair in 2018

They provide one-stop agricultural solutions for farmers and agribusiness from planting to sales. It will become the most professional international agricultural expo in China and provide one-stop production and marketing platform for global high-quality agricultural products. The exhibition will gather more than 20 countries and regions to bring the best agricultural products and agricultural technology to the exhibition.

Agricultural planting machinery; water-saving irrigation devices; agricultural facilities and equipment; agricultural and sideline product processing machinery; signature agricultural machinery for the production of tea, edible fungus, etc.; garden machinery; agricultural transport machinery; engineering machinery that is applicable in agriculture and various kinds of agricultural machinery accessories.

The expo will consist of 4 special exhibitions +2 special conferences; In addition, during the exhibition, "recommended products for world agricultural expo every year" will be selected and certificates will be issued.



The Australian soil and water specialist has visited us at the end of 2015 and did the soil testing with a soil nutrition analyst.

And also we found a good water source for a tube well. We know that soil is a key element of agriculture. Without it we would not be able to grow the plants, which are used as food for both humans and animals. There are two important aspects we are discuss here with soil properties that are concerned. First, we focus on its hydraulic conductivity, the ability of the soil to manage, hold or drain water. Second, we look at its nutrient management, we refer to the chemical as well as mineral make-up of the soil as the consistency as well as soil texture every soil is a mixture of

three main components, sand, clay and silt.



# CEO of CAP Green attends to the Agri Technica Asia

- Largest Agri Conference in Bangkok 2018



The study of post harvesting and value addition technology is most important, Harvested fruits and vegetables require adequate and advanced post-harvest processing technologies for minimizing the qualitative as well as quantitative losses after harvesting. Nearly 40% of fruits and vegetables are wasted every year due to improper handling, storage, packaging, and transportation. Value-added agriculture may also refer to increasing the economic value of a commodity through particular production processes, e.g., organic produce, or through regionally branded products that increase consumer appeal and willingness to pay a premium over similar but undifferentiated products.

Value-added agriculture refers more generally to that increase the value of primary agricultural commodities. Value-added agriculture may also refer to increasing the economic value of a commodity through particular production processes, e.g., organic produce, or through regionally branded products that increase consumer appeal and willingness to pay a premium over similar but undifferentiated products. It can also be described as the process that transforms the raw agricultural product into something new through packaging, processing, cooling, drying, extracting, and other processes that change a product from its original raw form. [1] As a result of this transformation, the customer base of a product and revenue sources for the producer are expanded.

[ceylonorganiceu@gmail.com](mailto:ceylonorganiceu@gmail.com) |

[www.capceylon-eu.com](http://www.capceylon-eu.com)

The logo for Gulfood live in-person features the word "Gulfood" in a large, black, serif font. Below it, the word "live" is written in a white, cursive font, set against a red, brush-stroke-like background. Underneath "live", the words "in-person" are written in a black, cursive font. The entire logo is set against a white background with a faint, light blue outline of a building or structure behind the text.

*Gulfood*  
*live*  
*in-person*

# CEO of CAP Organic visited Dubai to attend Gulfood live in-person 2021

The world's largest event for F&B processing, packaging and ingredients, enabling F&B manufacturers to deliver best-quality products through the most advanced machinery & production solutions.

The annual event that matters for food manufacturing globally, Gulfood Manufacturing returns live in-person from 7-9 November 2021 at Dubai World Trade Centre.

Every year the world's biggest food manufacturers take over the show floor to unveil their advanced technologies – from production to processing to packaging.



# Articles





# YouTube interviews



**more details**

# Television interviews







Listen first up, to the life story and vision of the young entrepreneur that has enabled him position Sri Lanka with innovative fruit products creating avenues for growth and self employment of youth.



### CERTIFICATE

CERTIFICATE No: CU 88861EU-01.2022  
REGISTRATION No: CU 88861

Field of attention:  
Organic production methods  
Organic EU

Issued to:  
**CAP Organic (Pvt) Ltd**  
37/E/3, Ambasewana Road, Kalagedihena

11875 Gampaha

SRI LANKA

Standard:  
Control Union Certifications Production Standards and Regulation (EC) No 834/2007 and Regulation (EC) No 853/2008 on organic production of agricultural products and indications referring thereto on agricultural products and foodstuffs, including the amending regulations, and Control Union Certifications (CU) Inspection Regulations.

Valid until: 15 June 2023

Control Union Certifications declares to have inspected the unit(s), and/or product(s) of the above mentioned client, and have found them in accordance with the standards mentioned above.

This certificate covers the unit(s), and/or product(s) as mentioned in the authenticated annex of this certificate. This document has been issued on the basis of Article 28(1) of Regulation (EC) No 834/2007 and of Regulation (EC) No 853/2008. The declared operator has submitted his activities under control, and meets the requirements laid down in the named Regulations.

Labeling of the product must state CU/CB code number.  
This certificate remains in force until further notice, provided that the participant continues to meet the conditions as laid down in the (blank) contract with Control Union Certifications B.V. and verified in inspections by Control Union Certifications B.V.

IX-820-149  
Date of certification:  
21 July 2022  
Last date of inspection: 15 June 2022  
Place and date of issue:  
Colombo 00700, 21 July 2022

Developed by:  
  
M. K. Uthayakumar  
Managing Director

Certifier:  
Control Union Certifications B.V.  
Meesmeerlaan 4-G  
8012 BX ZWOLLE  
The Netherlands  
http://www.controlunion.com  
Tel: + 31(0)38-4260100



### CERTIFICATE

CERTIFICATE No: CU 888661NOP-01.2022  
REGISTRATION No: CU 888661

Field of attention:  
Organic production methods  
USDA-NOP  
CROPS, HANDLING / PROCESSING

Issued to:  
**CAP Organic (Pvt) Ltd**  
37/E/3, Ambasewana Road, Kalagedihena

11875 Gampaha

SRI LANKA

Standard:  
Certified to the USDA organic regulation, 7 CFR Part 205.

Anniversary date: 14 June 2023

Control Union Certification declares to have inspected the unit(s), and/or product(s) of the above mentioned client, and have found them in accordance with the standards mentioned above.  
Once certified, a production or handling operation's organic certification continues in effect until surrendered, suspended or revoked.  
Anniversary date - when the certified operation must submit its annual update.

Effective date:  
21 July 2022  
Place and date of issue:  
Colombo 00700, 04 August 2022



Control Union Certifications is  
officially accredited by the United  
States Department of Agriculture



Developed by:  
  
M. K. Uthayakumar  
Managing Director

Certifier:  
Control Union Certifications B.V.  
Meesmeerlaan 4-G  
8012 BX ZWOLLE  
The Netherlands  
http://www.controlunion.com  
Tel: + 31(0)38-4260100



# TEST REPORT

(7419)089-0088

Apr 12, 2019

Report No:

Page 2 of 4

## TEST RESULTS

No.	Parameters	Results	LOQ	Unit	Test Method
1	pH at 25 °C	3.7	-	-	Direct measurement by pH meter
2	Brix Value	13.4	-	g/100g	SLS 1332 Part 2 : 2008 (By Direct Refractometer Reading )
3	Energy	55.1	-	Kcal/100g	Codex Guidelines on Nutrition Labelling
4	Cholesterol	ND	0.1	mg/100g	In House Method with reference to Journal of AOAC International Vol.76, No.4, 1993 with GC-FID
5	Total Fat	0.3	-	g/100g	SLS 1427: 2011
6	Saturated fat	0.2	-	g/100g	In House Method with reference to AOAC 996.06
7	Potassium as K	63.0	-	mg/100g	FD-MTHD-034 with ICP-MS
8	Titrateable Acidity	0.2	-	g/100g	SLS 729: Appendix C : 2010
9	Total Carbohydrate	12.7	-	g/100g	Codex Guidelines on Nutrition Labelling
10	Total Sugar as sucrose	9.7	-	g/100g	SLS 586 :1982
11	Protein content	0.4	-	g/100g	CPSD-AN-00238 MTHD reference to AOAC 17th Edition, 2000
12	Salt Content (as NaCl)	0.1	-	g/100g	CPSD-AN-00267
13	Vitamin C	75.6	-	mg/100g	In House Method with HPLC-DAD
14	Total Plate Count*	12	-	cfu/ml	ISO 4833-1:2013/ SLS 516: PART 1: 2013
15	<i>Escherichia coli</i> *	ND	-	MPN/ml	ISO 7251:2005/ SLS 516:Part 12:2013
16	<i>Salmonella spp.</i> *	Absent	-	In 25.0ml	ISO 6579:2002/AMD 1:2007 SLS 516: PART 5: 2013
17	Yeast Count*	<10	-	cfu/ml	ISO 21527-1:2008 / SLS 516 Part 2 Section 1: 2013
18	Mould Count*	<10	-	cfu/ml	ISO 21527-1:2008 / SLS 516 Part 2 Section 1: 2013
19	Total coliform	ND	-	MPN/ml	ISO 4831:2006 SLS 516 Part 3 Section 1 :2013

The content of this PDF file is in accordance with the original issued reports for reference only.  
This Test Report cannot be reproduced, except in full, without prior written permission of the company.



TEST REPORT



Sample No.: SL:GL:2010000039

DATE : 30/06/2020

Order No. : 20190020

Report No. 2015000048

SAMPLE NOT DRAWN BY IDB-SGS FOOD LABORATORY, SRI LANKA

SAMPLE IDENTIFIED AS : BEVERAGES

COMPANY NAME CAP Organic (Pvt) Ltd  
 ADDRESS No 37/E/3, Ambasewana Road,  
 CITY Kalagedihana  
 COUNTRY Sri Lanka  
 SAMPLE DESCRIPTION SAMPLE IDENTIFIED BY THE CUSTOMER AS: GRAVIOLA COMFORT  
 REF. BATCH NO: 24122019  
 RECEIVED UNDER GLASS BOTTLE  
 SAMPLE CONDITION 250 ml \* 3  
 SAMPLE QUANTITY 15-June-2020  
 SAMPLE RECEIVED ON 15-June-2020  
 JOB START DATE 30-June-2020  
 JOB END DATE

TESTS	PROTOCOL	RESULT
FAT	IDB-SGS/LCHE/TM/SOP/04	NOT DETECTED (LOD 0.1%)
NON REDUCING SUGAR	IDB-SGS/LCHE/TM/SOP/09	1.8%
SALT (as SODIUM CHLORIDE)	IDB-SGS/LCHE/TM/SOP/08	0.05%
TOTAL SUGAR	IDB-SGS/LCHE/TM/SOP/06	8.1%

\*\*\*\* End of Report \*\*\*\*

Page 1 of 2

WARNING: The sample(s) to which the findings recorded herein (the "findings") relate (hereinafter "drawn and / or provided by the Customer or by a third party acting at the Customer's direction. The findings constitute no warranty of the sample's representativeness of any goods and strictly relate to the sample(s). The Food Laboratory IDB-SGS Lanka accepts no liability with regard to the origin or source from which the sample(s) were said to be extracted.

This document is issued by the Food Laboratory IDB-SGS Lanka subject to its General Conditions of Service printed overleaf, available on request or accessible at [http://www.idb.gov.lk/index.php?option=com\\_content&view=article&id=548&Itemid=955&lang=en](http://www.idb.gov.lk/index.php?option=com_content&view=article&id=548&Itemid=955&lang=en) and <http://www.sgs.com/en/Terms-and-Conditions.aspx> and, for electronic format documents, subject to Terms and Conditions for Electronic Documents at [http://www.idb.gov.lk/index.php?option=com\\_content&view=article&id=548&Itemid=955&lang=en](http://www.idb.gov.lk/index.php?option=com_content&view=article&id=548&Itemid=955&lang=en) and <http://www.sgs.com/en/Terms-and-Conditions/Terms-e-Documents.aspx>.

Attention is drawn to the limitation of liability, indemnification and jurisdiction issues defined therein. Any holder of this document is advised that information contained herein reflects the Food Laboratory IDB-SGS Lanka's findings at the time of its intervention only and within the limits of Client's instructions, if any. The Food Laboratory IDB-SGS Lanka's sole responsibility is to its Client and this document does not exonerate parties to a transaction from exercising all their rights and obligations under the transaction documents. This document cannot be reproduced except in full, without prior written approval of the Food Laboratory IDB-SGS Lanka. Any unauthorized alteration, forgery or falsification of the content or appearance of this document is unlawful and offenders may be prosecuted to the fullest extent of the law.

Unless otherwise stated the results shown in this test report refer only to the sample(s) tested and each sample(s) are retained only for 90 days (dry samples), 7 days (perishable samples) from the date of report.

Industrial Development Board Food Laboratory IDB - SGS Lanka, 815, Galle Road, Katubeddi, Colombo, Sri Lanka. a foodlab@idb.lk | +94 02 712 603031 | +94 02 712 603032



2019

### CERTIFICATE OF REGISTRATION

This certifies that:

**Cap Green Forest, (Private) Limited**  
**37/E/3, Ambasewana Road**  
**Kalagedihena, Western, 11875**  
**Sri Lanka**

is registered with the U.S. Food and Drug Administration pursuant to the Federal Food Drug and Cosmetic Act, as amended by the Bioterrorism Act of 2002 and the FDA Food Safety Modernization Act, such registration having been verified as currently effective on the date hereof by Registrar Corp.

U.S. FDA Registration No.: **14466120712**  
 U.S. Agent for FDA Communications: **Registrar Corp**  
 144 Research Drive, Hampton, Virginia, 23666, USA  
 Telephone: +1-757-224-0177 • Fax: +1-757-224-0179

*This certificate affirms that the above stated facility is registered with the U.S. Food and Drug Administration pursuant to the Federal Food Drug and Cosmetic Act, as amended by the Bioterrorism Act of 2002 and the FDA Food Safety Modernization Act, such registration having been verified as effective by Registrar Corp as of the date hereof, and Registrar Corp will confirm that such registration remains effective upon request and presentation of this certificate until December 31, 2019, unless such registration has been terminated after issuance of this certificate. Registrar Corp makes no other representations or warranties, nor does this certificate make any representations or warranties to any person or entity other than the named certificate holder, for whose sole benefit it is issued. Registrar Corp assumes no liability to any person or entity in connection with the foregoing. The U.S. Food and Drug Administration does not issue a certificate of registration, nor does the U.S. Food and Drug Administration recognize a certificate of registration. Registrar Corp is not affiliated with the U.S. Food and Drug Administration.*

**Registrar Corp**

144 Research Drive, Hampton, Virginia, 23666, USA  
 Telephone: +1-757-224-0177 • Fax: +1-757-224-0179  
 info@registrarcorp.com • www.registrarcorp.com

*Russell K. Statman*  
 Russell K. Statman  
 Executive Director  
 Registrar Corp  
 Dated: June 18, 2019  
 Copyright © 2003-2019 Registrar Corp



### TEST REPORT



Sample No.: **SL:GL:2010000038**

DATE : **30/06/2020**

Order No. : 20100020

Report No. :201500047

**SAMPLE NOT DRAWN BY IDB-SGS FOOD LABORATORY, SRI LANKA**

**SAMPLE IDENTIFIED AS : BEVERAGES**

COMPANY NAME: **CAP Organic (Pvt) Ltd**  
 ADDRESS: **No 37/E/3, Ambasewana Road,**  
 CITY: **Kalagedihena**  
 COUNTRY: **Sri Lanka**  
 SAMPLE DESCRIPTION: **SAMPLE IDENTIFIED BY THE CUSTOMER AS: GRAVIOLA CLEANSE**  
 REF. BATCH NO: **03122019**  
 RECEIVED UNDER GLASS BOTTLE  
 SAMPLE CONDITION: **250 ml \* 3**  
 SAMPLE QUANTITY: **15-June-2020**  
 SAMPLE RECEIVED ON: **15-June-2020**  
 JOB START DATE: **30-June-2020**  
 JOB END DATE:

TESTS	PROTOCOL	RESULT
FAT	IDB-SGS/LCHE/TM/SOP/04	NOT DETECTED (LOD 0.1%)
NON REDUCING SUGAR	IDB-SGS/LCHE/TM/SOP/09	NOT DETECTED (LOD 0.5%)
SALT (as SODIUM CHLORIDE)	IDB-SGS/LCHE/TM/SOP/08	0.05%
TOTAL SUGAR	IDB-SGS/LCHE/TM/SOP/09	4.0%

\*\*\*\* End of Report \*\*\*\*

Page 1 of 2

WARNING: The sample(s) to which the findings recorded herein (the "findings") relate was/were drawn and / or provided by the Customer or by a third party acting at the Customer's direction. The findings constitute no warranty of the sample's representativeness of any goods and strictly relate to the sample(s). The Food Laboratory IDB-SGS Lanka accepts no liability with regard to the origin or source from which the sample(s) were said to be extracted.

This document is issued by the Food Laboratory IDB-SGS Lanka subject to its General Conditions of Service printed overleaf, available on request or accessible at [http://www.idb.gov.lk/index.php?option=com\\_content&view=article&id=54&Itemid=255](http://www.idb.gov.lk/index.php?option=com_content&view=article&id=54&Itemid=255) and <http://www.sgs.com/en/Terms-and-Conditions.aspx> and, for electronic format documents, subject to Terms and Conditions for Electronic Documents at [http://www.idb.gov.lk/index.php?option=com\\_content&view=article&id=54&Itemid=255&lang=en](http://www.idb.gov.lk/index.php?option=com_content&view=article&id=54&Itemid=255&lang=en) and <http://www.sgs.com/en/Terms-and-Conditions/Tests-e-Documents.aspx>.

Attention is drawn to the limitation of liability, indemnification and jurisdiction issues defined therein. Any holder of this document is advised that information contained hereon reflects the Food Laboratory IDB-SGS Lanka's findings at the time of its intervention only and within the limits of Client's instructions, if any. The Food Laboratory IDB-SGS Lanka's sole responsibility is to its Client and this document does not exonerate parties to a transaction from exercising all their rights and obligations under the transaction documents. This document cannot be reproduced except in full, without prior written approval of the Food Laboratory IDB-SGS Lanka. Any unauthorized alteration, forgery or falsification of the content or appearance of this document is unlawful and offenders may be prosecuted to the fullest extent of the law.

Unless otherwise stated the results shown in this test report refer only to the sample(s) tested and such sample(s) are retained only for 90 days (90 samples, 7 days (7000ml samples)) from the date of report.

# SGS



### TEST REPORT



Sample No.: **SL:GL:201000038** DATE : **30/06/2020**

Order No. : 20100020 Report No. : 201500047

TESTS	PROTOCOL	RESULT

IDB-SGS Lanka Food Laboratory  
Chemical Laboratory  
Industrial Development Board

*Gajanthi Srisankandaseelan*  
Laboratory Manager

**Gajanthi Srisankandaseelan**  
Food Laboratory - Chemical  
IDB - SGS Lanka

Page 2 of 2

WARNING: The sample(s) to which the findings recorded herein (the "Findings") relate was(were) drawn and / or provided by the Customer or by a third party acting at the Customer's direction. The Findings constitute no warranty of the sample's representativeness of any goods and strictly relate to the sample(s). The Food Laboratory IDB-SGS Lanka accepts no liability with regard to the origin or source from which the sample(s) is/are said to be extracted.

This document is issued by the Food Laboratory IDB-SGS Lanka subject to its General Conditions of Service printed overleaf, available on request or accessible at [http://www.idb.gov.lk/index.php?option=com\\_content&view=article&id=843&Itemid=366&lang=en](http://www.idb.gov.lk/index.php?option=com_content&view=article&id=843&Itemid=366&lang=en) and <http://www.sgs.com/en/Terms-and-Conditions.aspx> and, for electronic format documents, subject to Terms and Conditions for Electronic Documents at [http://www.idb.gov.lk/index.php?option=com\\_content&view=article&id=843&Itemid=366&lang=en](http://www.idb.gov.lk/index.php?option=com_content&view=article&id=843&Itemid=366&lang=en) and <http://www.sgs.com/en/Terms-and-Conditions/Terms-e-Document.aspx>.

Attention is drawn to the limitation of liability, indemnification and jurisdiction issues defined therein. Any holder of this document is advised that information contained hereon reflects the Food Laboratory IDB-SGS Lanka's findings at the time of its intervention only and within the limits of Client's instructions, if any. The Food Laboratory IDB-SGS Lanka's sole responsibility is to its Client and this document does not exonerate parties to a transaction from exercising all their rights and obligations under the transaction documents. This document cannot be reproduced except in full, without prior written approval of the Food Laboratory IDB-SGS Lanka. Any unauthorized alteration, forgery or falsification of the content or appearance of this document is unlawful and offenders may be prosecuted to the fullest extent of the law.

Unless otherwise stated the results shown in this test report refer only to the sample(s) tested and such sample(s) are retained only for 90 days (90 samples), 7 days (perishable samples) from the date of report.

Good for People. Good for the Planet.



## CAP Green

is a Good Market approved vendor from  
May 4, 2018

Good Market is a curated platform for  
people creating a better world





TEST REPORT



Sample No.: SL:GL:201000041 DATE : 30/06/2020

Order No. : 20100020 Report No. : 201500048

SAMPLE NOT DRAWN BY IDB-SGS FOOD LABORATORY, SRI LANKA

SAMPLE IDENTIFIED AS : BEVERAGES

COMPANY NAME: CAP Organic (Pvt) Ltd
ADDRESS: No 37/E/3, Ambasewana Road, Kalagedihena
CITY: Sri Lanka
COUNTRY: Sri Lanka
SAMPLE DESCRIPTION: SAMPLE IDENTIFIED BY THE CUSTOMER AS: GRAVIOLA COMFORT
REF: BATCH NO: 24122019
RECEIVED UNDER GLASS BOTTLE
SAMPLE CONDITION: 250 ml \* 3
SAMPLE QUANTITY: 15-June-2020
SAMPLE RECEIVED ON: 15-June-2020
JOB START DATE: 30-June-2020
JOB END DATE:

Table with 3 columns: TESTS, PROTOCOL, RESULT. Rows include ACIDITY as ANHYDROUS CITRIC ACID (0.3%), BENZOIC ACID (NOT DETECTED), and TOTAL SOLUBLE SOLIDS (9.0%).

End of Report

IDB-SGS Lanka Food Laboratory
Chemical Laboratory
Industrial Development Board

Gajanthi Sriskandaseelan
Laboratory Manager
Food Laboratory - Chemical
IDB - SGS Lanka

WARNING: The sample(s) to which the findings recorded herein (the "findings") relate was/were drawn and / or provided by the Customer...

This document is issued by the Food Laboratory IDB-SGS Lanka subject to its General Conditions of Service printed overleaf, available on request or accessible at...

Attention is drawn to the limitation of liability, indemnification and jurisdiction issues defined therein. Any holder of this document is advised that information contained herein reflects the Food Laboratory IDB-SGS Lanka's findings at the time of its intervention only and within the limits of Client's instructions...

Unless otherwise stated the results shown in this test report refer only to the sample(s) tested and such sample(s) are retained only for 90 days (dry samples), 7 days (perishable samples) from the date of report.



TEST REPORT



Sample No.: SL:GL:201000040 DATE : 30/06/2020

Order No. : 20100020 Report No. : 201500050

SAMPLE NOT DRAWN BY IDB-SGS FOOD LABORATORY, SRI LANKA

SAMPLE IDENTIFIED AS : BEVERAGES

COMPANY NAME: CAP Organic (Pvt) Ltd
ADDRESS: No 37/E/3, Ambasewana Road, Kalagedihena
CITY: Sri Lanka
COUNTRY: Sri Lanka
SAMPLE DESCRIPTION: SAMPLE IDENTIFIED BY THE CUSTOMER AS: GRAVIOLA COMFORT
REF: BATCH NO: 201908
RECEIVED UNDER CAN
SAMPLE CONDITION: 250 ml \* 4
SAMPLE QUANTITY: 15-June-2020
SAMPLE RECEIVED ON: 15-June-2020
JOB START DATE: 30-June-2020
JOB END DATE:

Table with 3 columns: TESTS, PROTOCOL, RESULT. Rows include ACIDITY as ANHYDROUS CITRIC ACID (0.2%), BENZOIC ACID (NOT DETECTED), and TOTAL SOLUBLE SOLIDS (9.9%).

End of Report

IDB-SGS Lanka Food Laboratory
Chemical Laboratory
Industrial Development Board

Gajanthi Sriskandaseelan
Laboratory Manager
Food Laboratory - Chemical
IDB - SGS Lanka

WARNING: The sample(s) to which the findings recorded herein (the "findings") relate was/were drawn and / or provided by the Customer...

This document is issued by the Food Laboratory IDB-SGS Lanka subject to its General Conditions of Service printed overleaf, available on request or accessible at...

Attention is drawn to the limitation of liability, indemnification and jurisdiction issues defined therein. Any holder of this document is advised that information contained herein reflects the Food Laboratory IDB-SGS Lanka's findings at the time of its intervention only and within the limits of Client's instructions...

Unless otherwise stated the results shown in this test report refer only to the sample(s) tested and such sample(s) are retained only for 90 days (dry samples), 7 days (perishable samples) from the date of report.

### Analytical Report

Reportnr: **1635311 version 1**  
 Sample Arrival Date: **20-Jul-2022 14:09**      Sampling Date: **15-Jun-2022**  
 ReportDate Version: **22-Jul-2022 15:16**      SampleSize (kg): **0.079**  
 Packing: **Plastic, ambient**

#### ANNEX

##### Method Descriptions

##### Contaminations

##### Pesticides

Method Description  
 Flexscope: Determination of the pesticide content, GC-MS-MS method  
 Flexscope: Determination of the pesticide content, LC-MS-MS method

##### Pesticides LCMSMS (neg. ionisation)

##### Method Description

Determination of Phenoxy alkane carboxylic acids components are performed with the optimized multimethod

##### Abbreviations:

acc: In accordance with  
 eq: Equivalent to

##### Method Code

Own method  
 Own method

##### Method Code



### Analytical Report

#### Control Union Sri Lanka Laboratory

Attn: To Whom it may concern  
 No. 100/8,03rd Floor, FPA Building, Nawala road  
 Narahenpita Colombo 00500  
 Sri Lanka

Reportnr: **1635311 version 1**  
 Sample Arrival Date: **20-Jul-2022 14:09**      Sampling Date: **15-Jun-2022**  
 ReportDate Version: **22-Jul-2022 15:16**      SampleSize (kg): **0.079**  
 Packing: **Plastic, ambient**

#### Sample information

Disponent Number: **888661**      Product specification: **Soursop**  
 Sealed / Seal Code: **Yes / CU021462, CU025915**      Reference: **CAP Organic (Pvt) Ltd**  
 AWS / BarCode: **V042 5476 417**

Disp. Remark: **PRD: 127483 (F01/01, 03)**

\* Information supplied by customer (TLR takes no responsibility for this information).

#### Contaminations

##### Pesticides

Parameter	Result (as received)	
Pesticides GC-MS-MS	Performed according annex, nothing detected	Q R1
Pesticides LC-MS-MS	Performed according annex, nothing detected	Q R1

Q R1  
 Q R1









# Outlets



**Good Market**  
"Lakpahana", 14 Reid Ave,  
Colombo 00700



**Park Street  
Gourmet**  
33B Park Street,  
Colombo 00200



**Govikama  
Farm Shop**  
41 Erawwala Rd,  
Pannipitiya 10230



**Sweet Surrender**  
321 Thalawathugoda Road,  
Sri Jayawardenepura Kotte  
10100



**EOdel**



**Celeste Daily**  
38 Iswari Rd,  
Colombo 00500



**Nature pick**  
26/A Kaduwela Rd,  
Malabe



**Angani**  
321 Thalawathugoda Road,  
Sri Jayawardenepura Kotte  
10100



Green Reach  
543/E/1  
Madiwela Rd,  
Colombo



Kenko 1st  
Organic Foods  
27, 12 Rosmead Pl,  
Colombo 00700



Pick & Pack  
Colombo 06



“HEAL” Aswanna  
Organic Pte Ltd  
No 188, Stanley Thilakarathne  
Mawatha, Nugegoda



Choc-A-Lot  
Wattala



Almas  
No. 45  
Marine Drive, Colombo



mahagedara.lk



Ceylon Pick  
639A, Kotte Road 10100  
Pita Kotte, Sri Lanka

